



NO GUARANTEES AS TO
THE ACCURACY OF
THESE DRAWINGS.

WHILE THESE WERE
DESIGNED AND BUILT IN
FUSION 360, BASED ON A
PRESS I HAD ALREADY
BUILT IN PERSON,
"COMPUTER DESIGNED"
REALLY JUST MEANS
"VERY ACCURATELY
DONE WRONG."

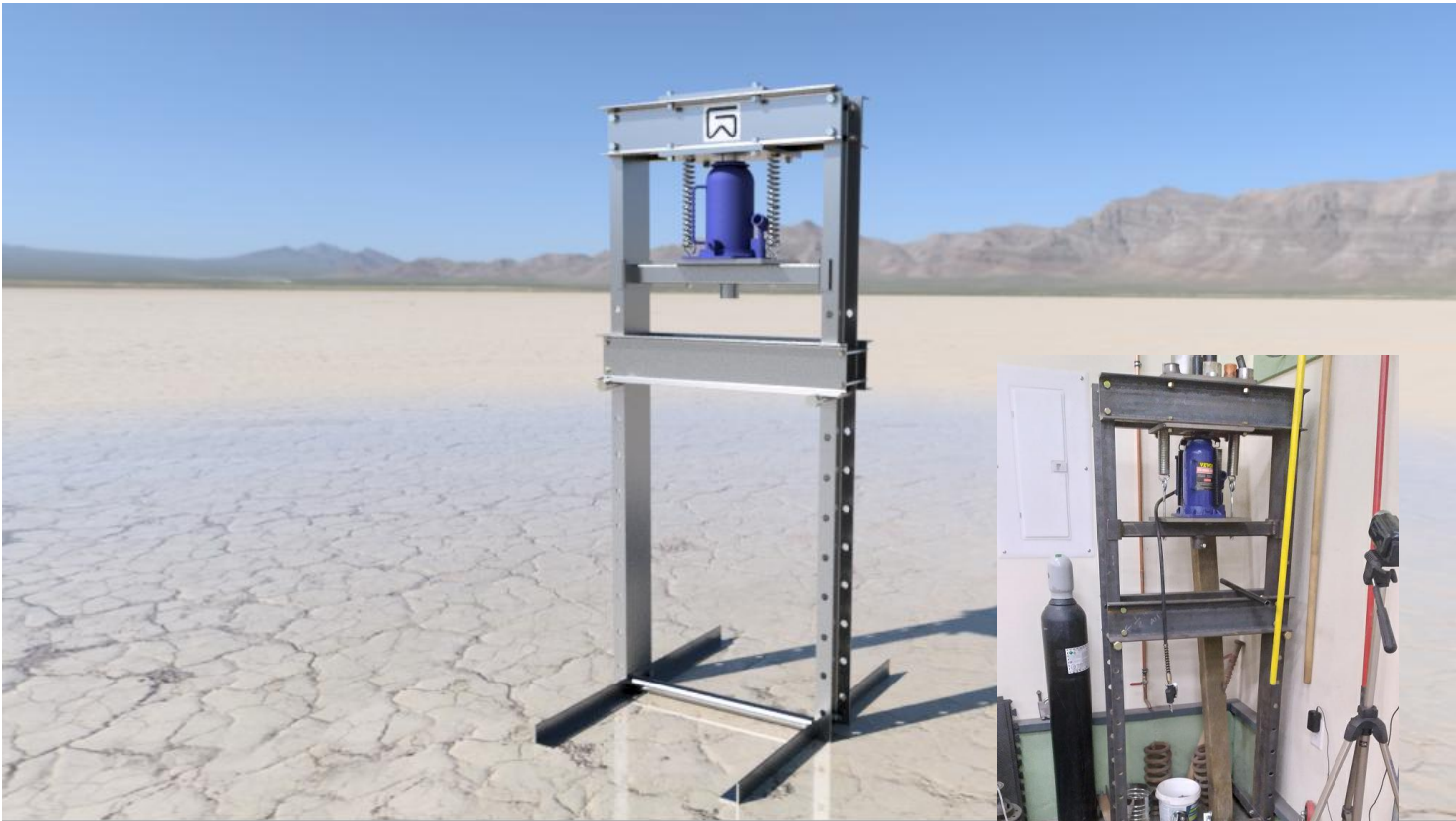
YOU ARE RESPONSIBLE
TO MAKE SURE WHAT
YOU BUILD WILL FIT.


NEVER TRUST THE
DRAWINGS.

FEEL FREE TO ALTER
ACCORDING TO THE
MATERIALS YOU HAVE.

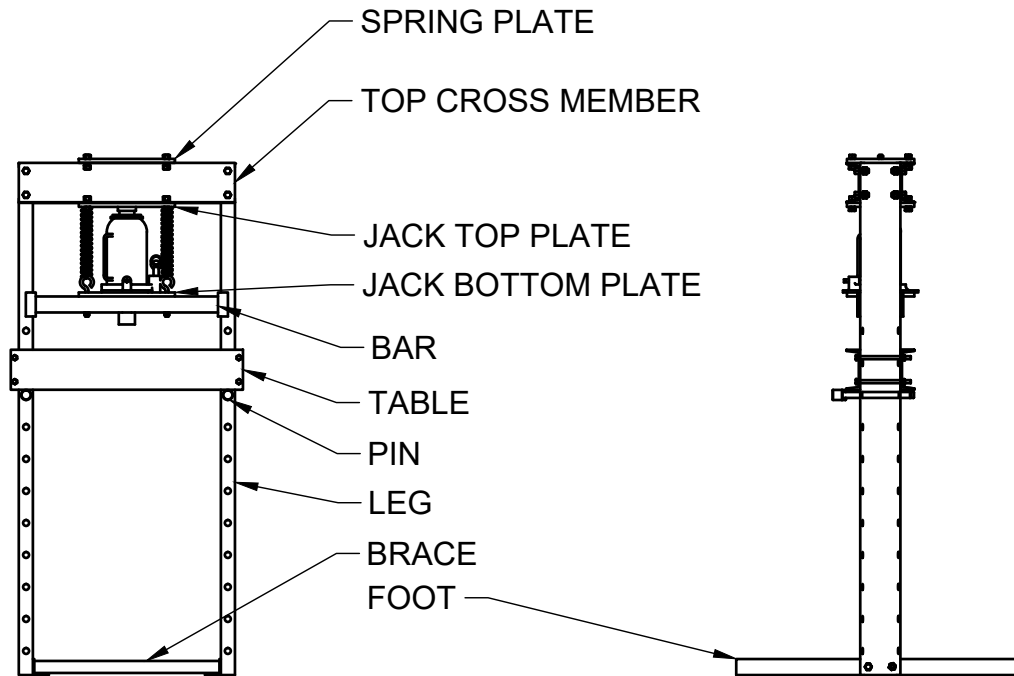
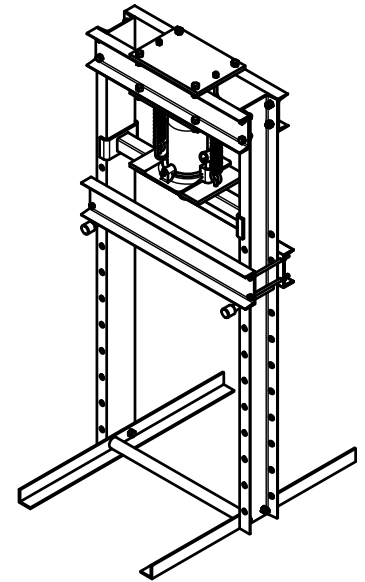
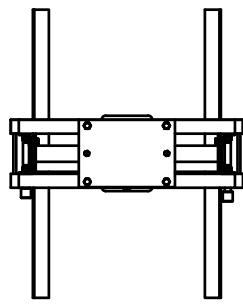
ALSO, YOU MAY WANT TO
PRICE OUT THE STEEL
AND COMPARE THAT TO
WHAT YOU CAN
PURCHASE NEW OR
USED. ACTUALLY MAKING
TOOLS ISN'T ALWAYS
COST-EFFECTIVE.

G WELLWOOD



 Mr. WELLWOOD'S SHOP OF HORRORS www.gwellwood.com	PROJECT HYDRAULIC PRESS		
	TITLE FULL PLANS		
DRAWN	Greg Wellwood 2022-11-14	SCALE 3" = 1'-0" WEIGHT	SHEET 1/13





Mr. WELLWOOD'S
SHOP OF HORRORS
www.gwellwood.com

PROJECT

HYDRAULIC PRESS

TITLE

ASSEMBLY

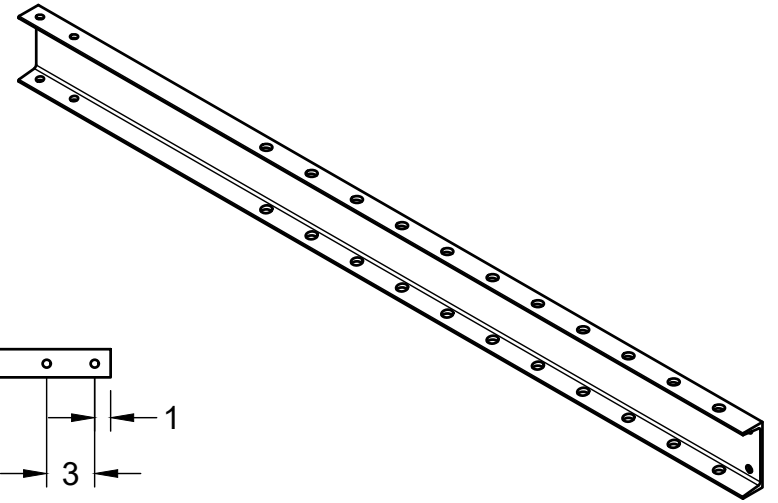
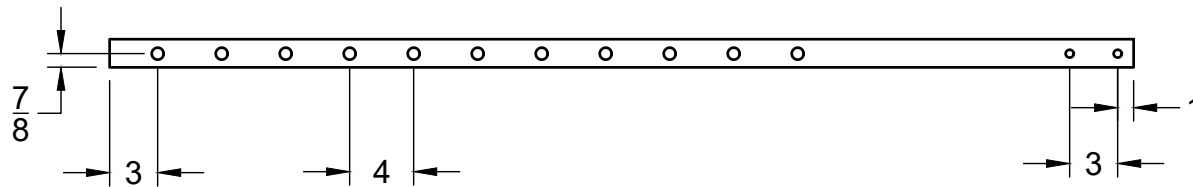
DRAWN

Greg Wellwood 2022-11-14

SCALE 3" = 1'-0"

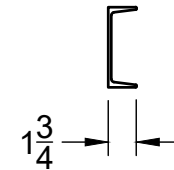
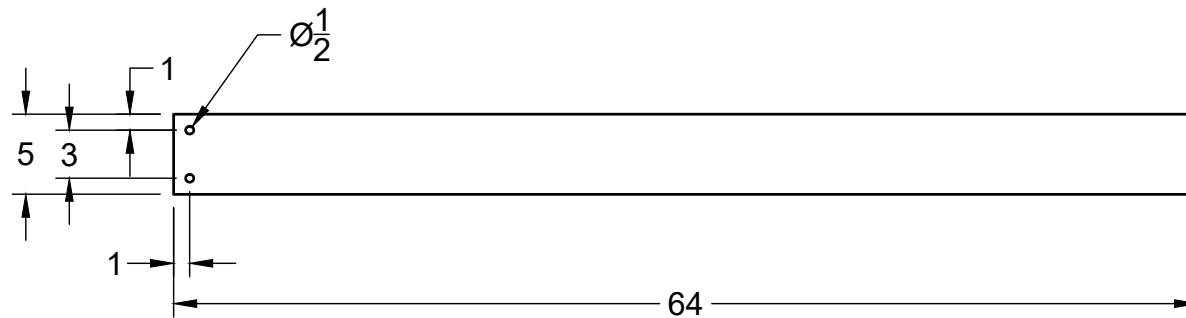
WEIGHT

SHEET 2/13



MILD STEEL CHANNEL IRON

REQUIRED: 2



Mr. WELLWOOD'S
SHOP OF HORRORS
www.gwellwood.com

PROJECT

HYDRAULIC PRESS

TITLE

LEG

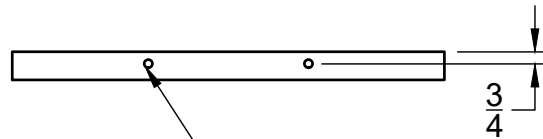
DRAWN

Greg Wellwood 2022-11-14

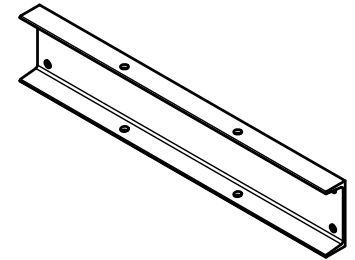
SCALE 1" = 1'-0"

WEIGHT

SHEET 3/13

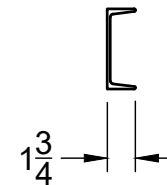
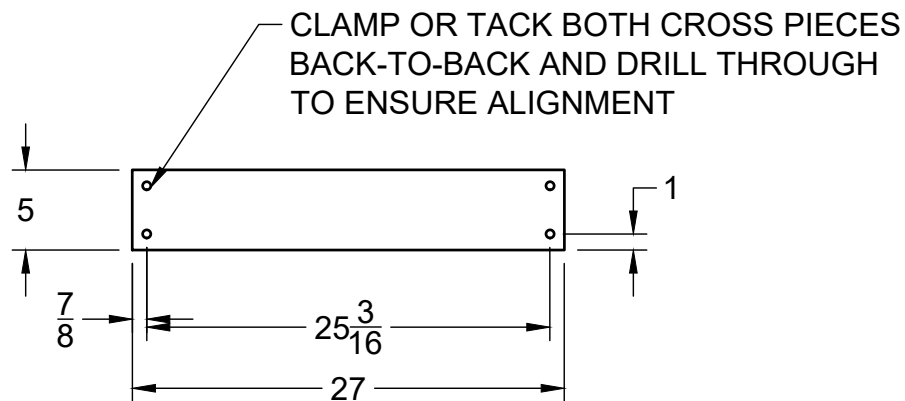


LOCATE USING HOLES IN PLATES
AS GUIDE



MILD STEEL CHANNEL IRON

REQUIRED: 2



Mr. WELLWOOD'S
SHOP OF HORRORS
www.gwellwood.com

PROJECT

HYDRAULIC PRESS

TITLE

TOP CROSS MEMBER

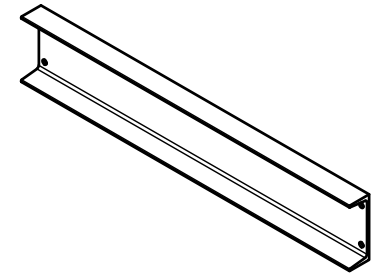
DRAWN

Greg Wellwood 2022-11-14

SCALE 1" = 1'-0"

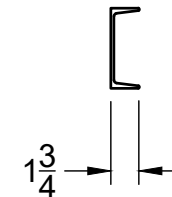
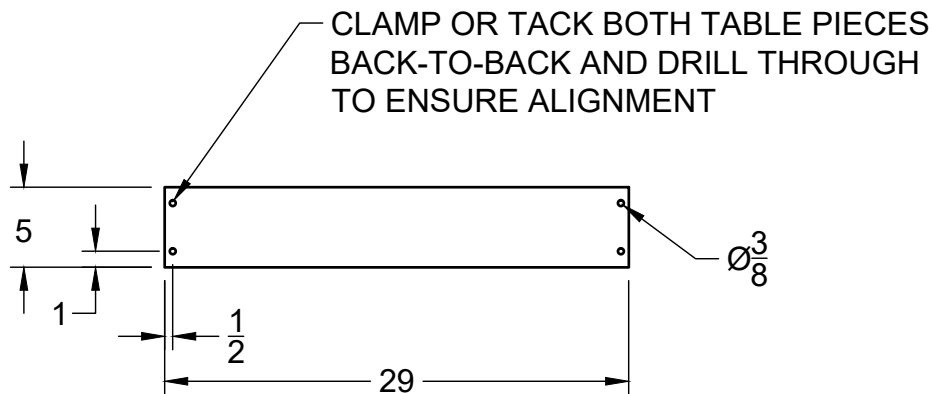
WEIGHT

SHEET 4/13



MILD STEEL CHANNEL IRON

REQUIRED: 2



Mr. WELLWOOD'S
SHOP OF HORRORS
www.gwellwood.com

PROJECT

HYDRAULIC PRESS

TITLE

BED FRAME

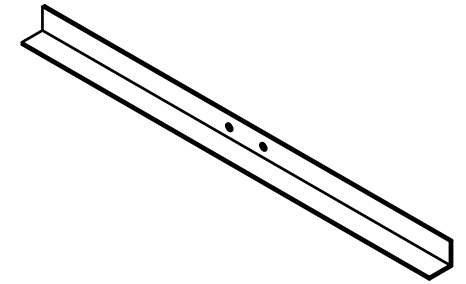
DRAWN

Greg Wellwood 2022-11-14

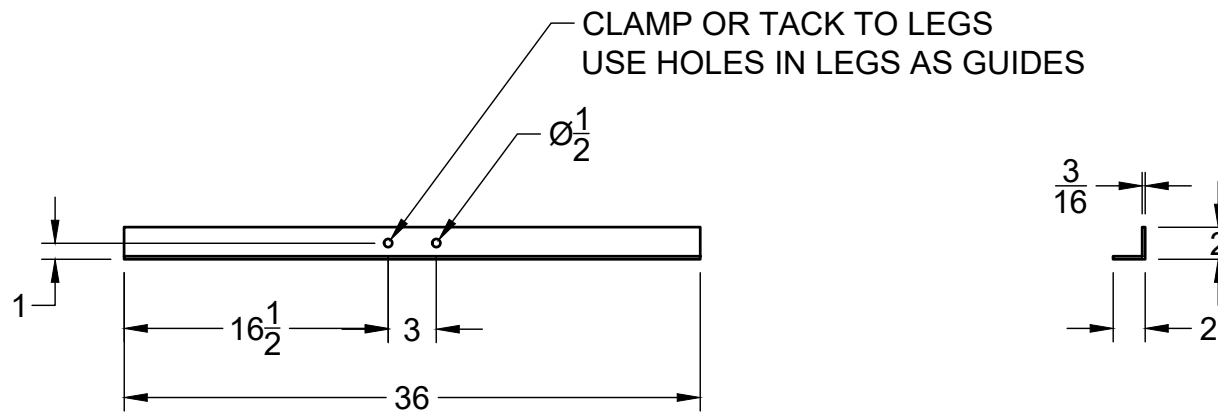
SCALE 1" = 1'-0"

WEIGHT

SHEET 5/13



MILD STEEL ANGLE IRON
REQUIRED: 2



Mr. WELLWOOD'S
SHOP OF HORRORS
www.gwellwood.com

PROJECT

HYDRAULIC PRESS

TITLE

FEET

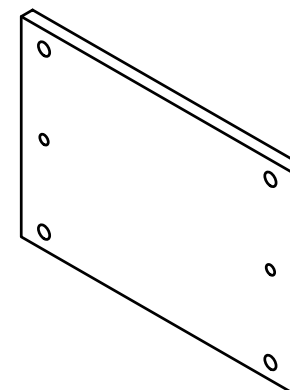
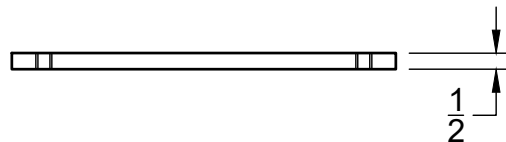
DRAWN

Greg Wellwood 2022-11-14

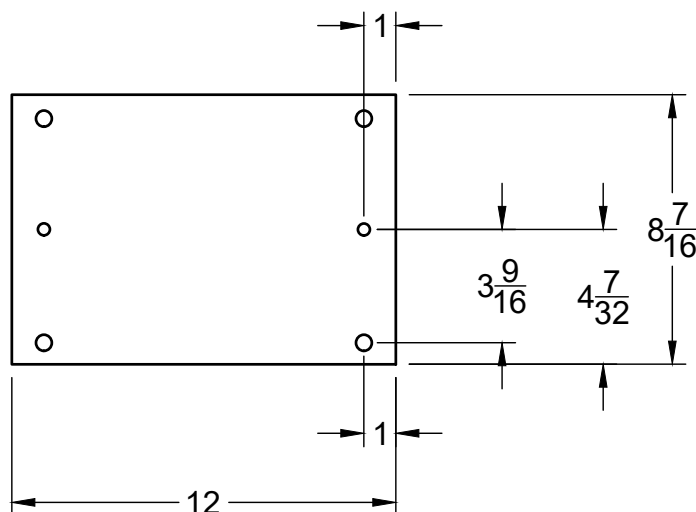
SCALE 1" = 1'-0"

WEIGHT

SHEET 6/13



USE HOLES IN PLATE
AS GUIDE TO DRILLING
TOP CROSS PIECE



MILD STEEL PLATE

REQUIRED: 1



Mr. WELLWOOD'S
SHOP OF HORRORS
www.gwellwood.com

PROJECT

HYDRAULIC PRESS

TITLE

SPRING PLATE

DRAWN

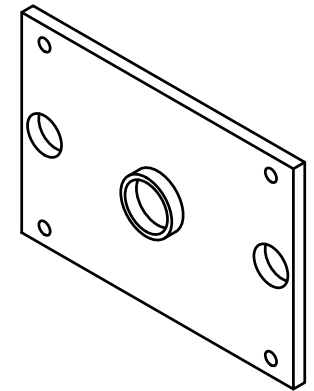
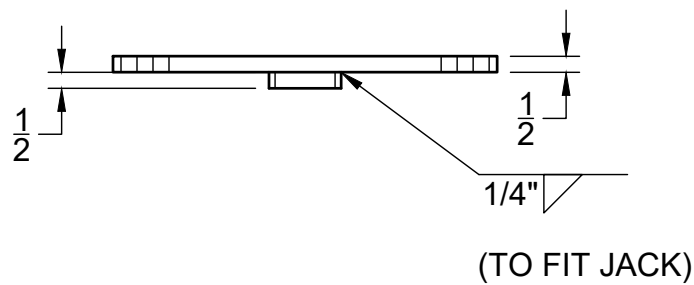
Greg Wellwood 2022-11-14

SCALE 1" = 1'-0"

WEIGHT

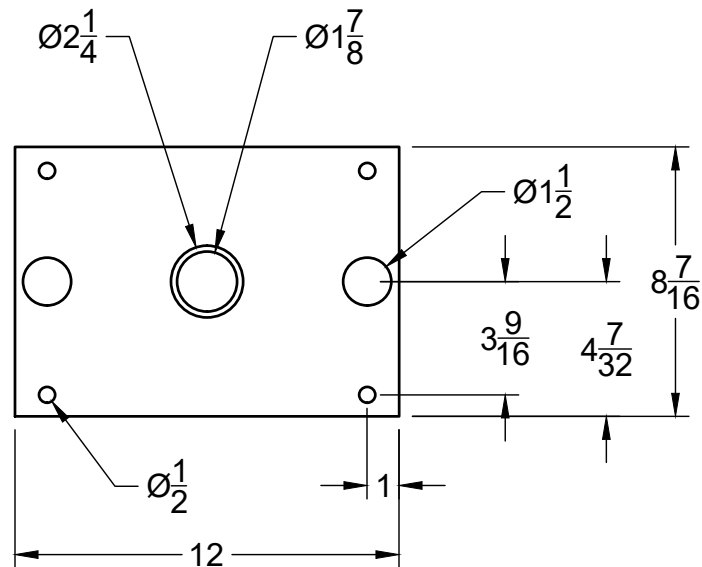
SHEET 7/13

USE HOLES IN PLATE
AS GUIDE TO DRILLING
TOP CROSS PIECE



MILD STEEL PLATE

REQUIRED: 1



PROJECT

HYDRAULIC PRESS

TITLE

JACK PLATE TOP

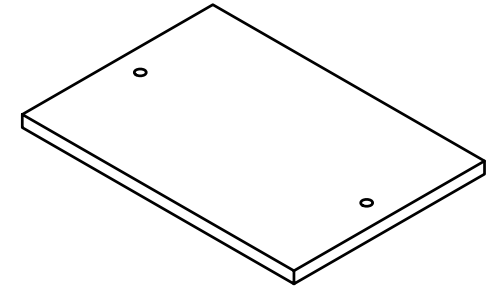
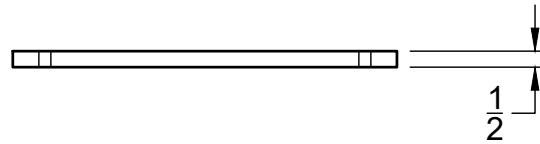
DRAWN

Greg Wellwood 2022-11-14

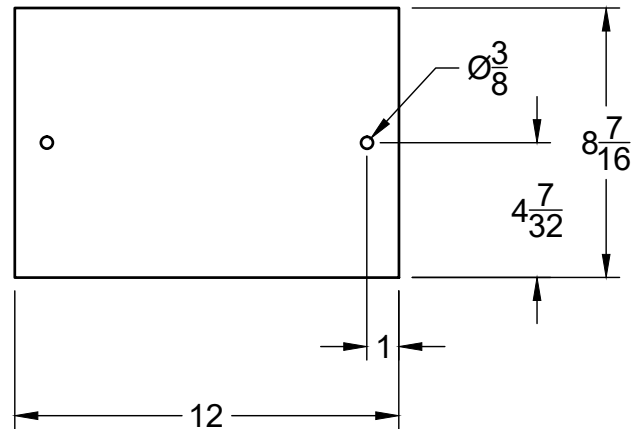
SCALE 1" = 1'-0"

WEIGHT

SHEET 8/13



USE HOLES IN PLATE AS
GUIDE TO DRILLING BAR



MILD STEEL PLATE

REQUIRED: 1



Mr. WELLWOOD'S
SHOP OF HORRORS
www.gwellwood.com

PROJECT

HYDRAULIC PRESS

TITLE

JACK PLATE BOTTOM

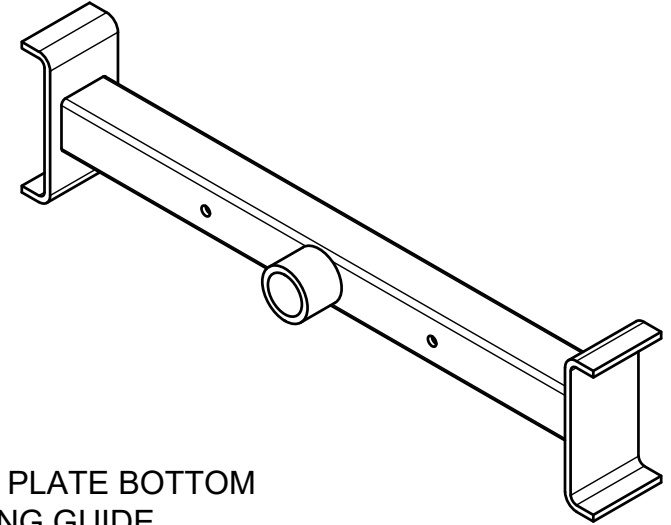
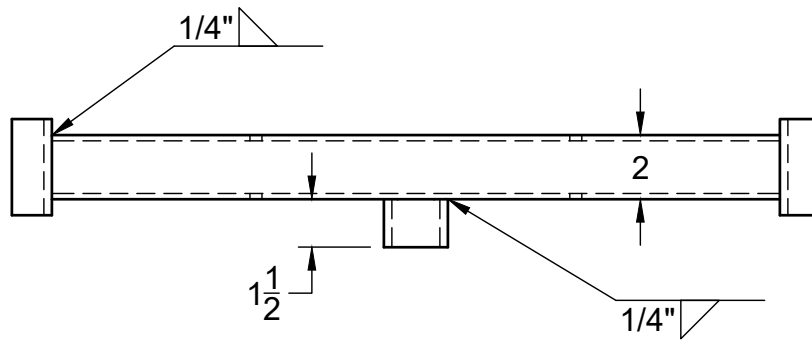
DRAWN

Greg Wellwood 2022-11-14

SCALE 1" = 1'-0"

WEIGHT

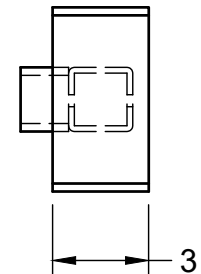
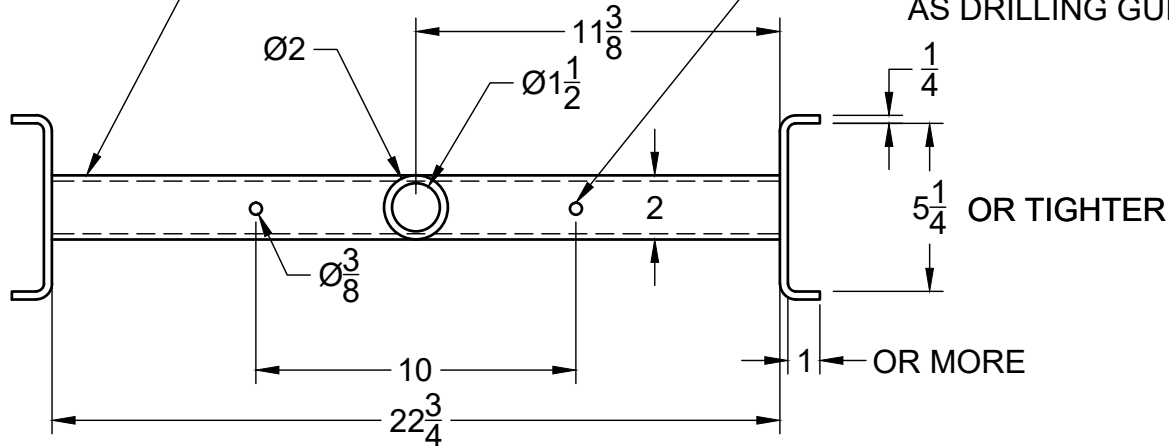
SHEET 9/13



MILD STEEL
REQUIRED: 1

2x2x1/4" SQUARE TUBING
BAR SHOULD FIT SNUG BUT MOVE
SMOOTHLY AND NOT BIND

USE JACK PLATE BOTTOM
AS DRILLING GUIDE



PROJECT

HYDRAULIC PRESS

TITLE

BAR

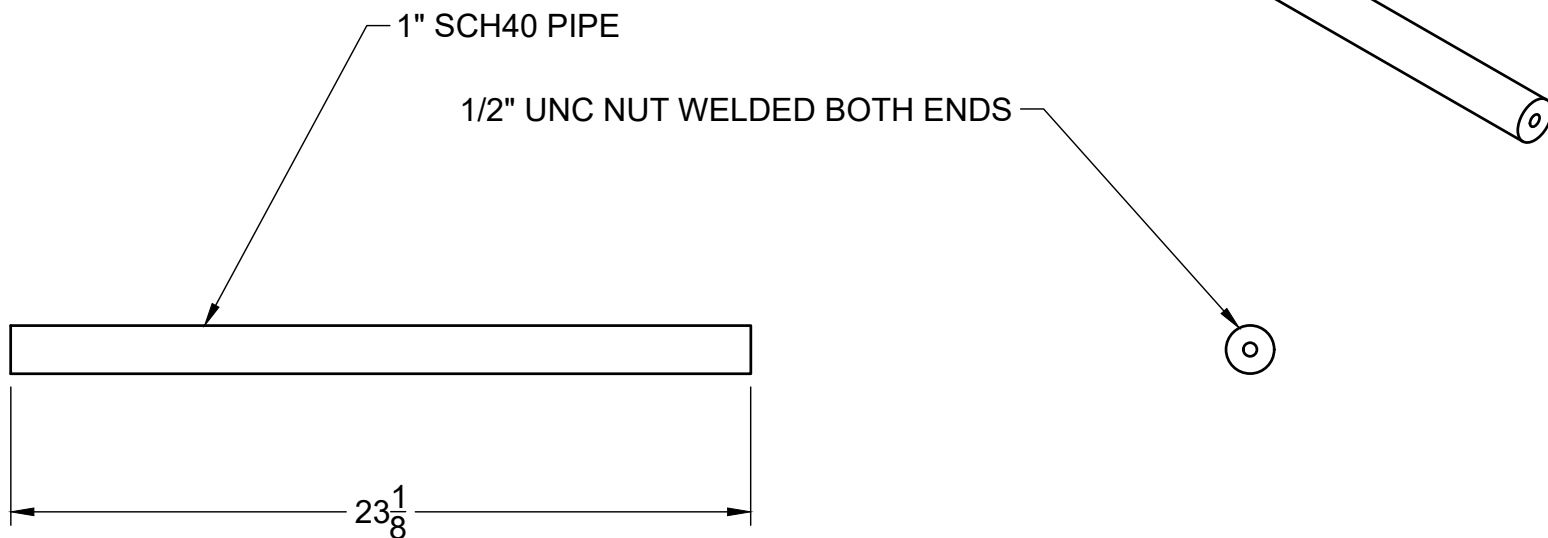
DRAWN

Greg Wellwood 2022-11-14

SCALE 2" = 1'-0"

WEIGHT

SHEET 10/13



REQUIRED: 1



Mr. WELLWOOD'S
SHOP OF HORRORS
www.gwellwood.com

PROJECT

HYDRAULIC PRESS

TITLE

SUPPORT

DRAWN

Greg Wellwood 2022-11-14

SCALE 2" = 1'-0"

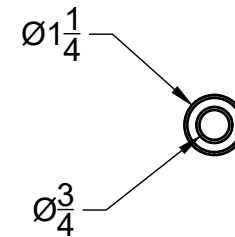
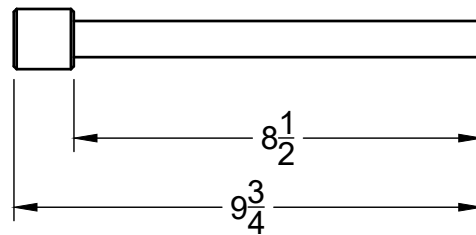
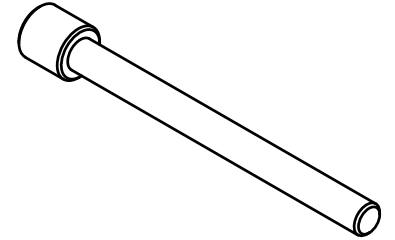
WEIGHT

SHEET 11/13

MILD STEEL

REQUIRED: 2

CHAMFER EDGES 1/16



Mr. WELLWOOD'S
SHOP OF HORRORS
www.gwellwood.com

PROJECT

HYDRAULIC PRESS

TITLE

PINS

DRAWN

Greg Wellwood 2022-11-14

SCALE 3" = 1'-0"

WEIGHT

SHEET 12/13

REQUIRED HARDWARE

- 2 - COIL SPRING 1.5x1.5x10.2 or equivalent
(<https://www.princessauto.com/en/shop-press-spring/product/PA0003461449>)
- 20 - 1/2"x2" UNC CAP SCREW
- 20 - 1/2" UNC NUT
- 4 - 3/8"x7" UNC CAP SCREW (ALSO ACT AS TABLE HANDLES)
- 4 - 3/8" UNC NYLOC NUT
- 4 - 3/8" EYE BOLT (LENGTH DEPENDING ON SPRING USED)
- 4 - CASTER WHEELS (OPTIONAL)
- 1 - 20T BOTTLE JACK
(https://www.vevor.ca/bottle-jacks-c_10306/air-hydraulic-ture-20-ton-bottle-jack-jacks-automotive-lift-tools-heavy-duty-p_010155129237)
(<https://www.princessauto.com/en/20-ton-multi-positional-hydraulic-bottle-jack/product/PA0008158321>)



Mr. WELLWOOD'S
SHOP OF HORRORS
www.gwellwood.com

PROJECT

HYDRAULIC PRESS

TITLE

REQUIRED HARDWARE

DRAWN

Greg Wellwood 2022-11-14

SCALE 3" = 1'-0"

WEIGHT

SHEET 13/13