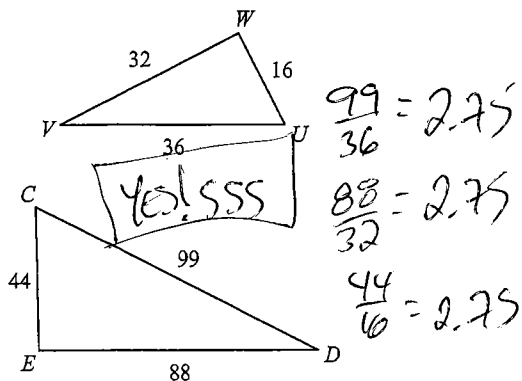


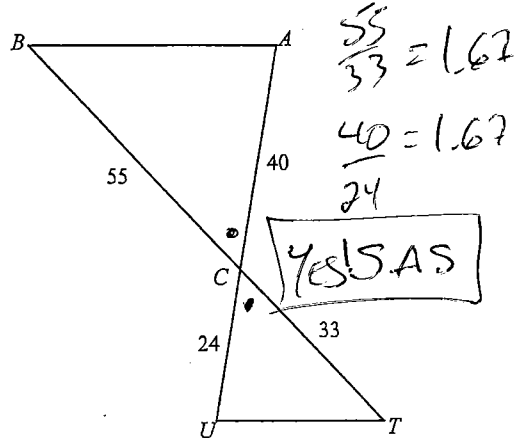
Similar Triangles

State if the triangles in each pair are similar. If so, state how you know they are similar.

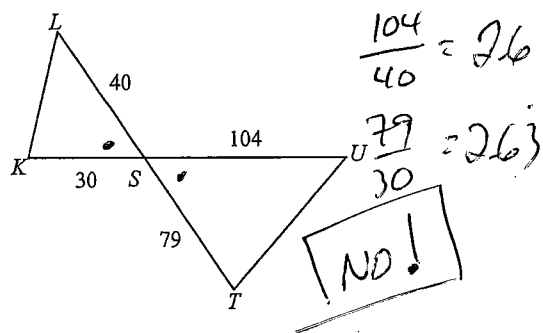
1)



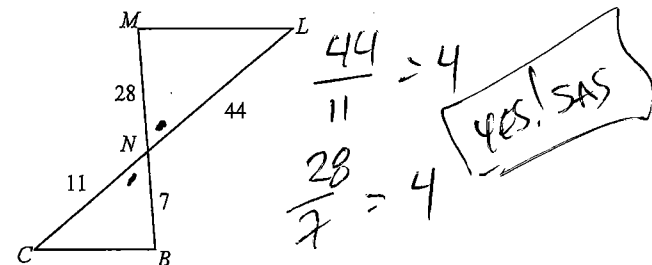
2)



3)

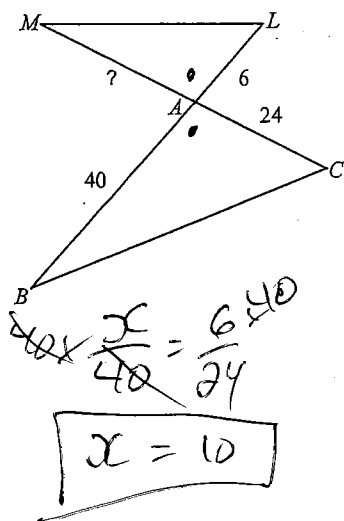


4)

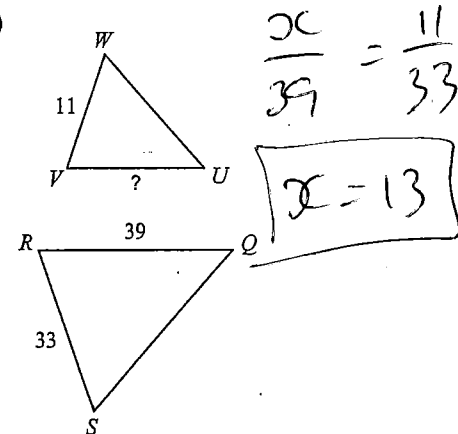


Find the missing length. The triangles in each pair are similar.

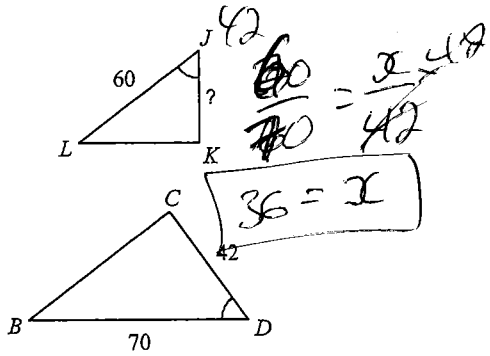
5)



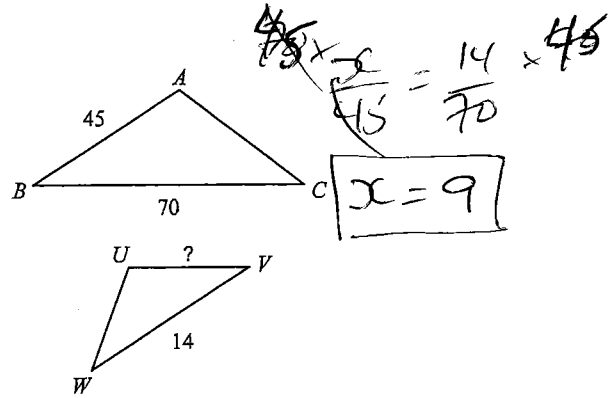
6)



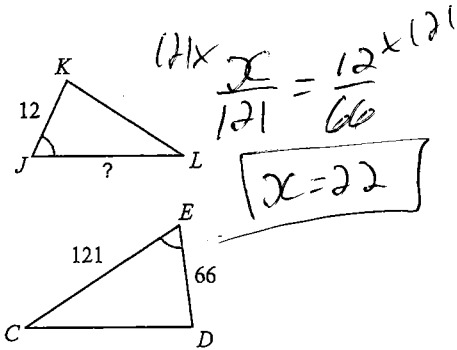
7)



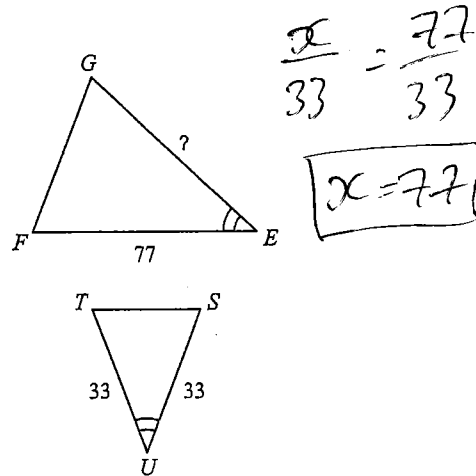
8)



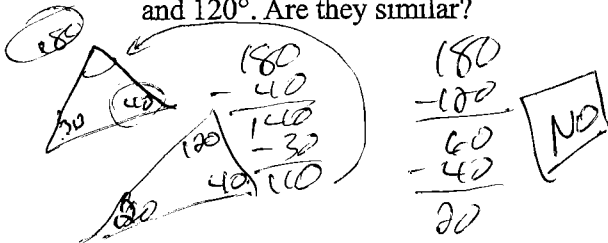
9)



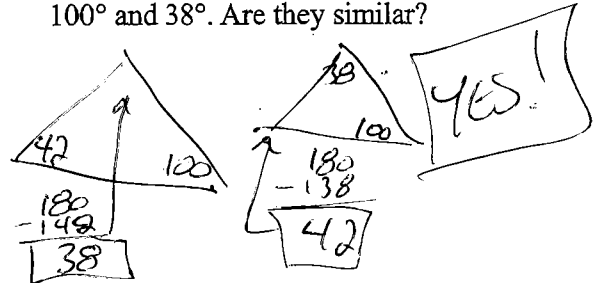
10)



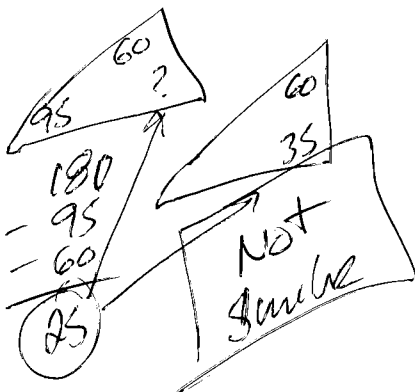
11) Triangle A has interior angles of 40° and 30° . Triangle B has interior angles of 40° and 120° . Are they similar?



12) Triangle A has interior angles of 42° and 100° . Triangle B has interior angles of 100° and 38° . Are they similar?



13) Triangle A has interior angles of 95° and 60° . Triangle B has interior angles of 35° and 60° . Are they similar?



14) Triangle A is a right triangle with an interior angle of 20° . Triangle B is a right triangle with an interior angle of 70° . Are they similar?

