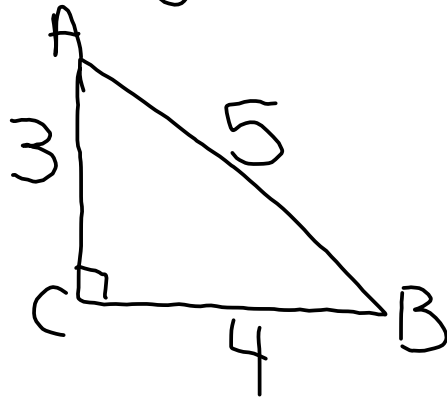


Notes May 11

Trigonometry Intro



Trig is all about ratios of sides.

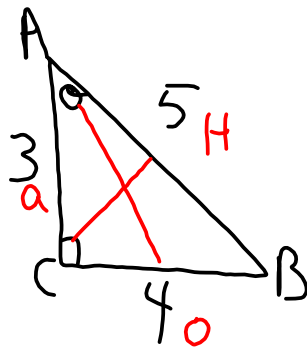
There are 3 trig Ratios:
Sin, Cos, Tan

$$\sin \theta = \frac{\text{opposite}}{\text{hypotenuse}}$$

$$\cos \theta = \frac{\text{adjacent}}{\text{hypotenuse}}$$

$$\tan \theta = \frac{\text{opposite}}{\text{adjacent}}$$

SOH CAH TOA



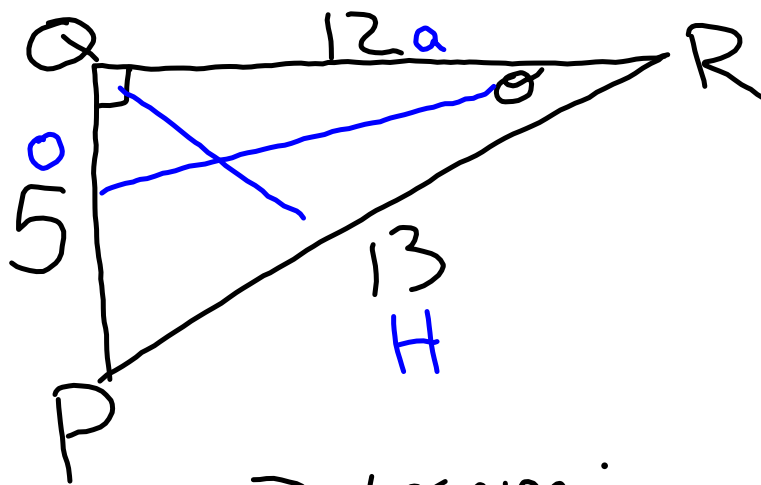
We want to label this triangle from the perspective of A.

$$\sin A = \frac{4}{5}$$

0.8

$$\cos A = \frac{3}{5} \quad \tan A = \frac{4}{3}$$

0.6 1.3



SOH CAH TOA

Determine:

$$\sin R = \frac{5}{13}$$
$$0.38$$

$$\cos R = \frac{12}{13}$$
$$0.92$$

$$\tan R = \frac{5}{12}$$
$$0.42$$