

to front floor

STRUT BAR

COIL SPRING  
- CUTLER

PRE CUT  
FOR SAF

DON'T WELD  
THE WEA  
AS THE  
WELDING

WEAK

OEM  
SWAY BAR  
HERE

SHORTEN  
FOR FIT

STRONGEST

TIRE CLEANER??  
(SUPPORT TIRE IT)

OR LENGTHEN

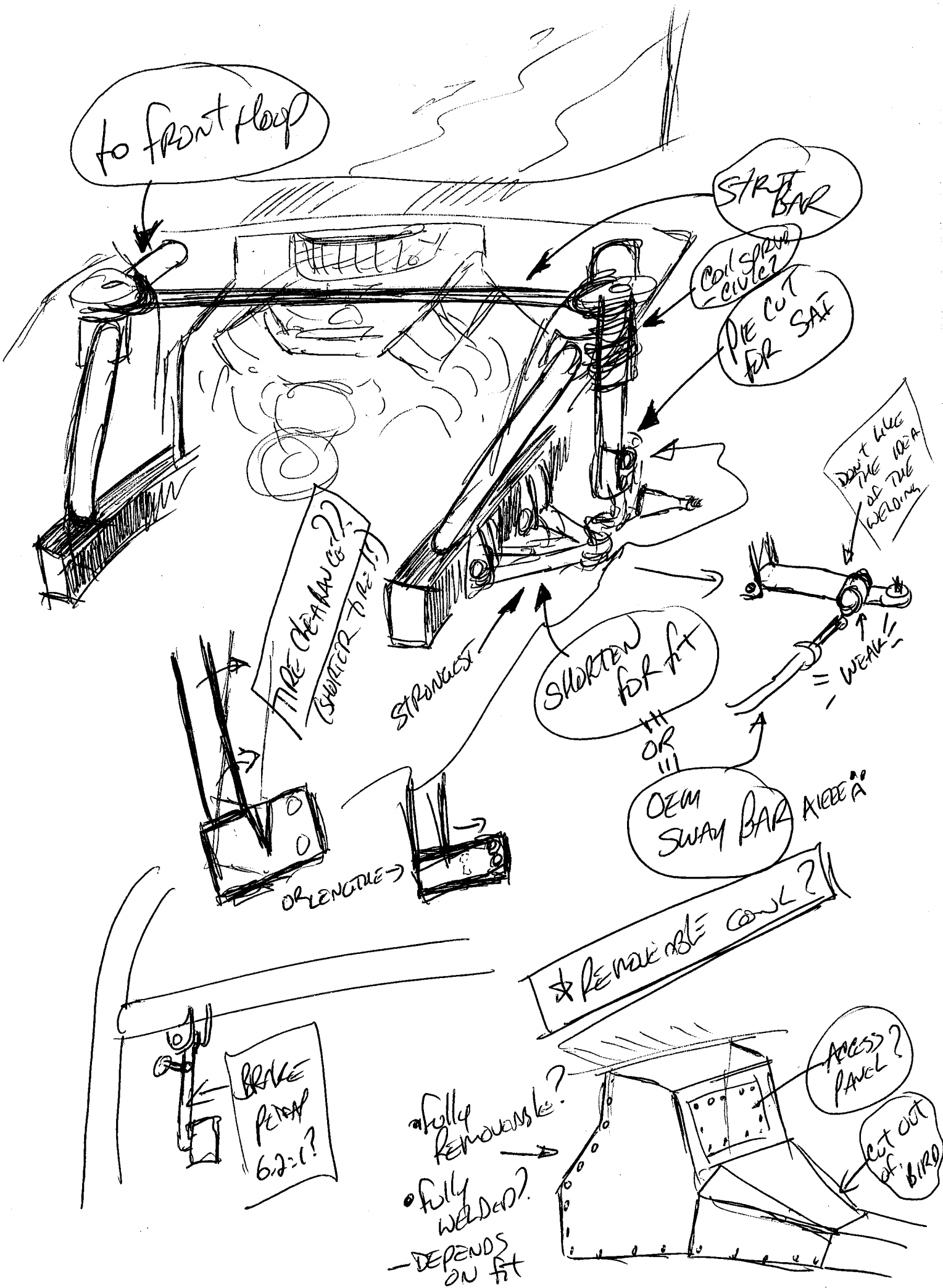
REMOVABLE COIL?

BRAKE  
PUMP  
6:2:1?

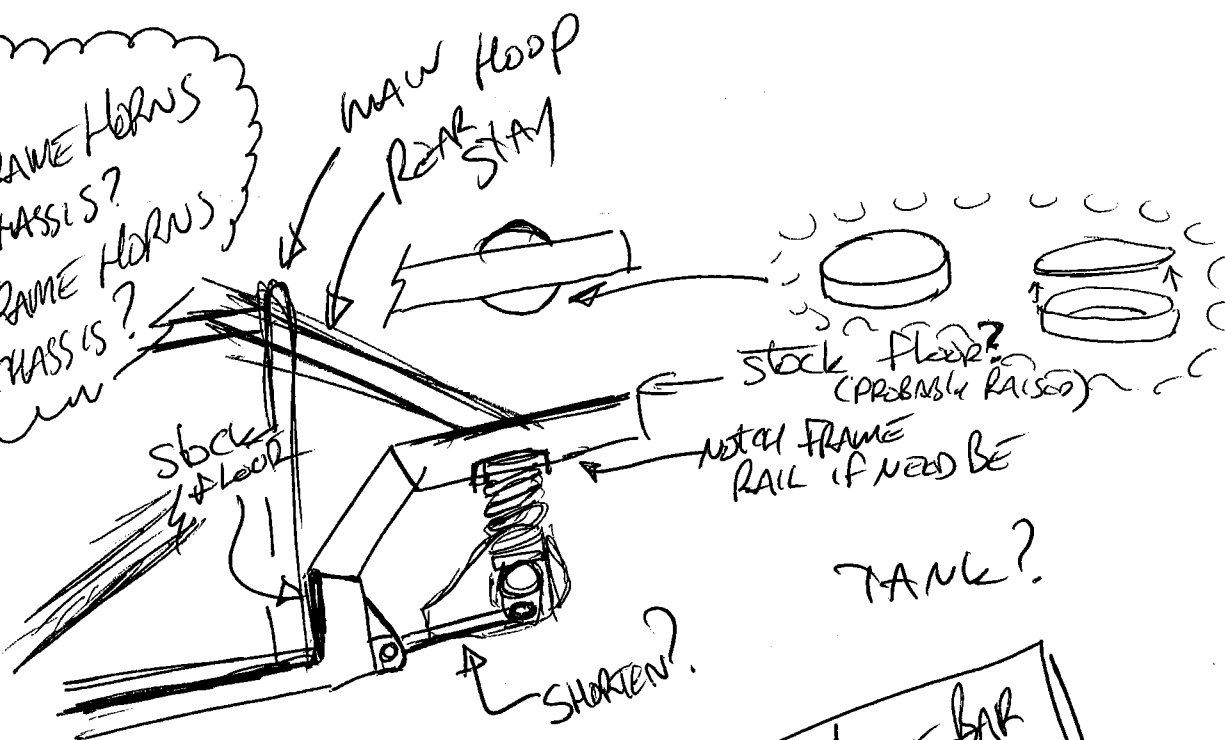
fully  
removable?  
fully  
welded?  
-DEPENDS  
ON FIT

ACCESS  
PANEL?

CUT OUT  
OF BIRD

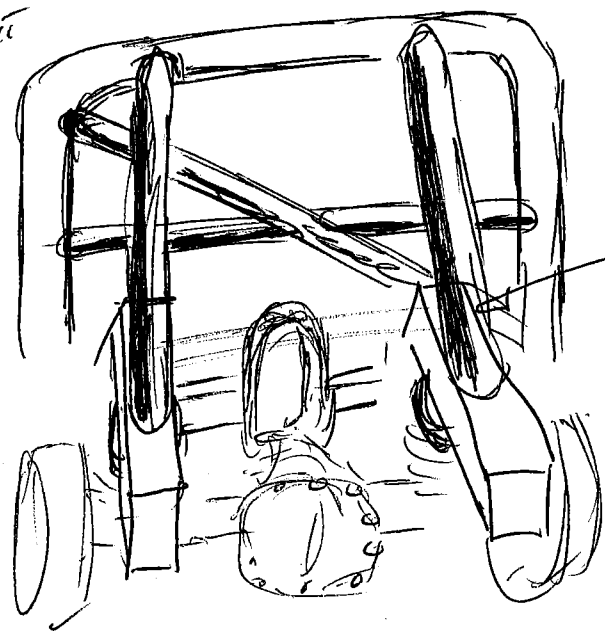


?  
 • FRONT FRAME HORNS  
 to CHASSIS?  
 • REAR FRAME HORNS  
 to CHASSIS?



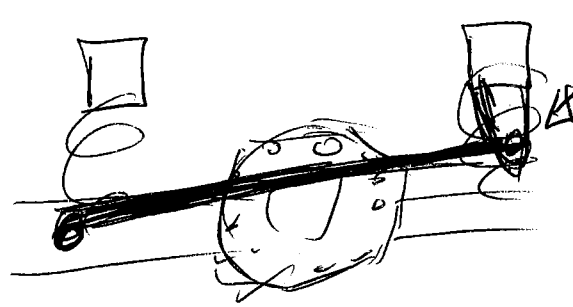
TANK?

MEASURES  
 - REAR RIDE HEIGHT  
 @ SPRING  
 - DETERMINE'S  
 REAR  
 KICKUP  
 HEIGHT



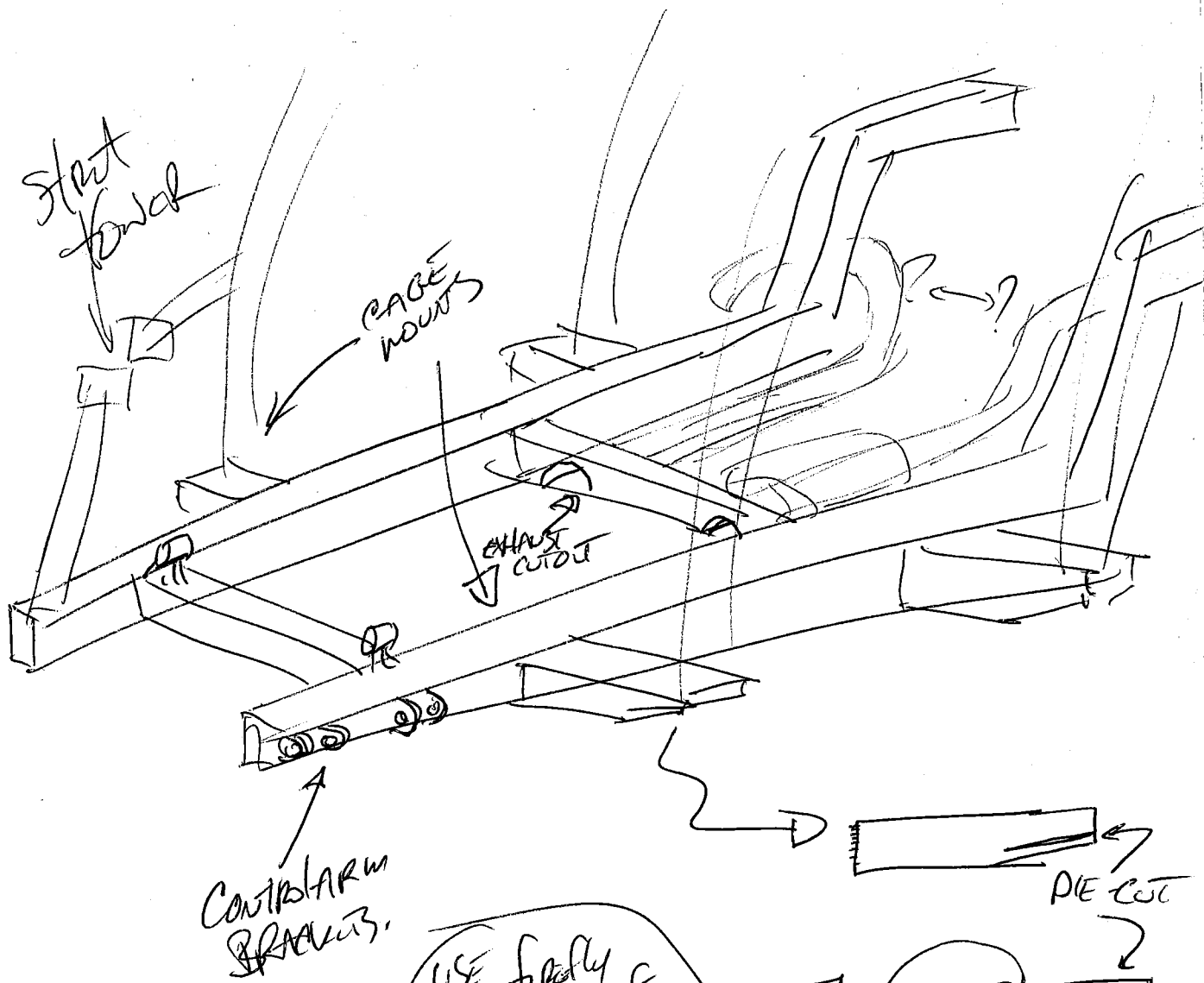
★ DRIVE BAR  
 ATTACH TO  
 CROSSMEMBER

NEED  
 HORIZONTAL  
 SOMewhere



NEED  
 PANWARD  
 BRACE @ HEIGHT

HUBS: AT LEAST 9" WIDE SLIDES  
 10" SPACE? 1" SPACE?



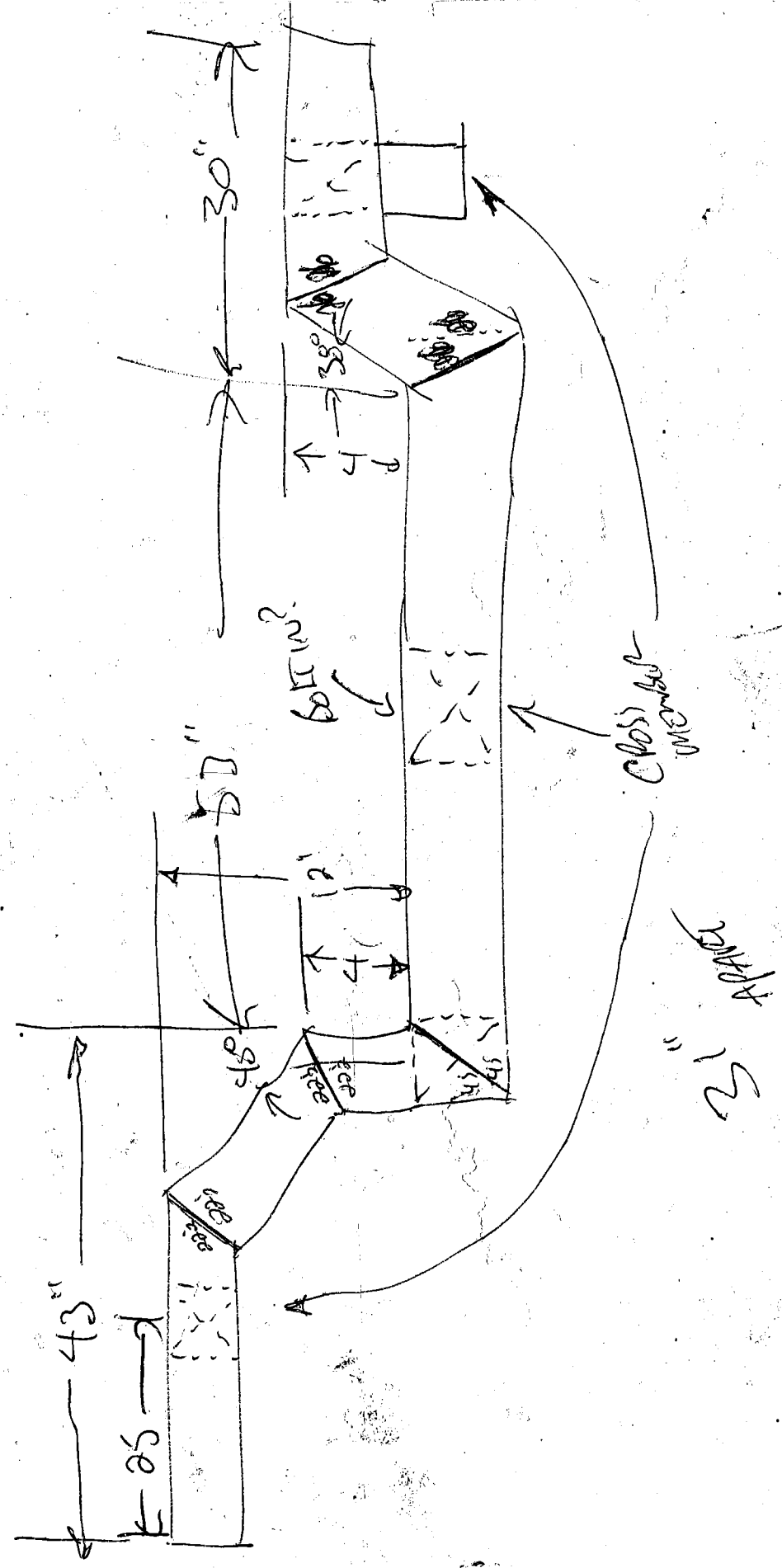
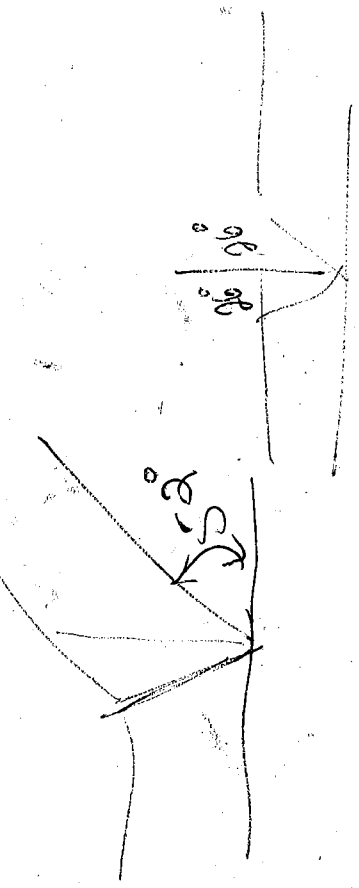
**To DO:**

- NOTCH FLOOR
- L + R FRAME RAILS + CROSS MEMBER
- CAGE HOOPS  
- DRILL FLOOR (HOLE SAW?)
- CAGE MOUNTS (+ NOTCH FLOOR)

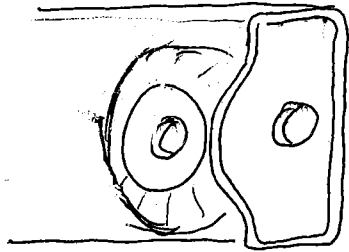
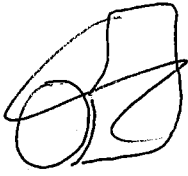
**To START:**

- WHEEL TUBS
- TRAILING ARM MOUNTS
- DRIVE ARM MOUNTS
- SPRING MOUNTS
- PANHARD MOUNTS

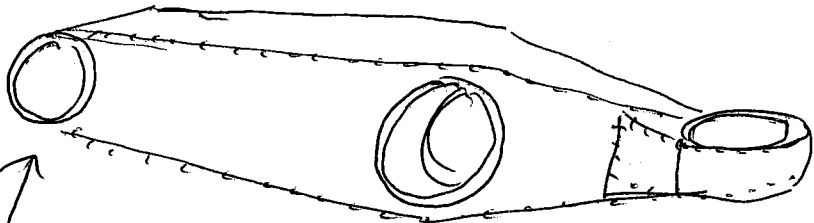
- LCA
- RTA
- TRAILING ARM
-



$\frac{8}{3} \frac{2}{3}$



EXTEND  
SUPPORT  
FOR BUSH



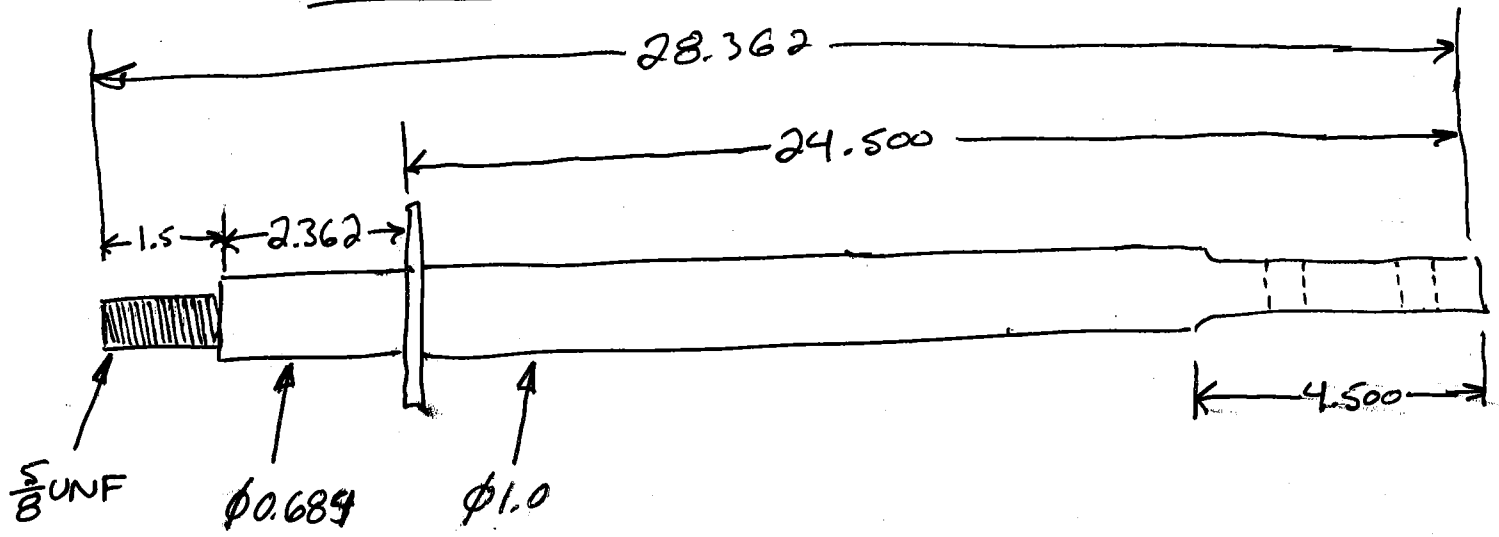
fit to  
FIREBIRD  
BUSH

A ARM

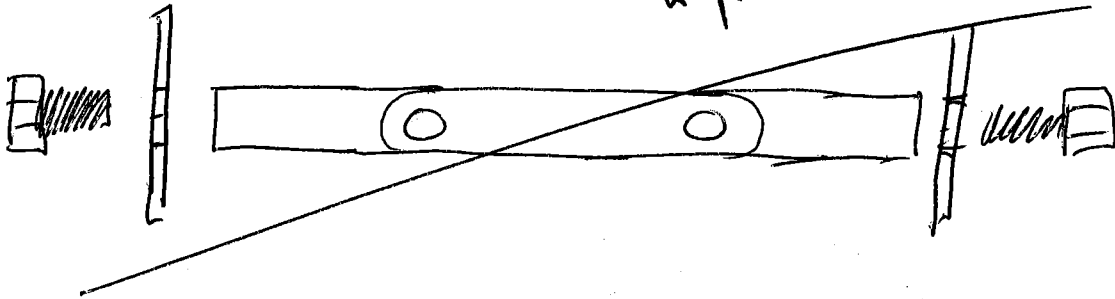
fit to  
OEM BAR

fit to  
FIREBIRD  
BJ

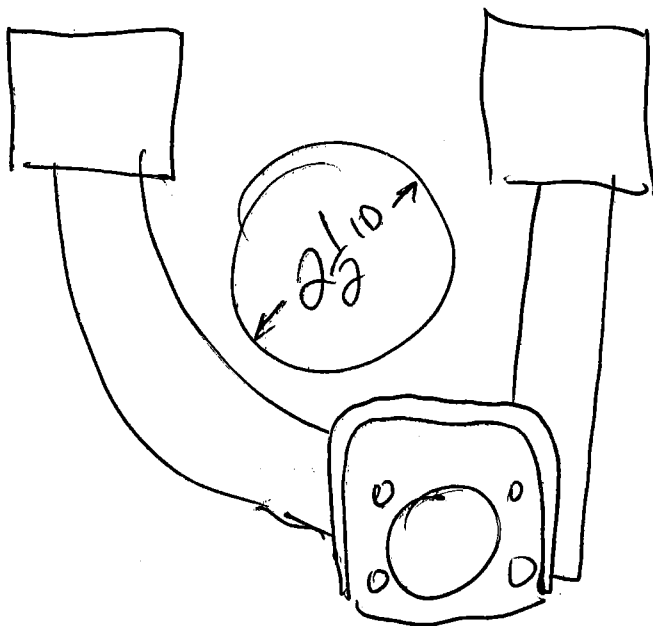
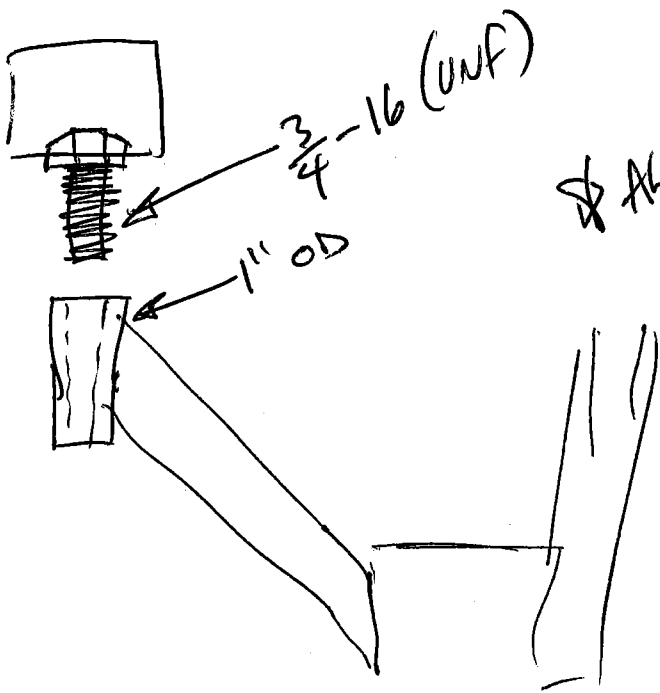
STRUT ROD



# PACKAGING ISSUE



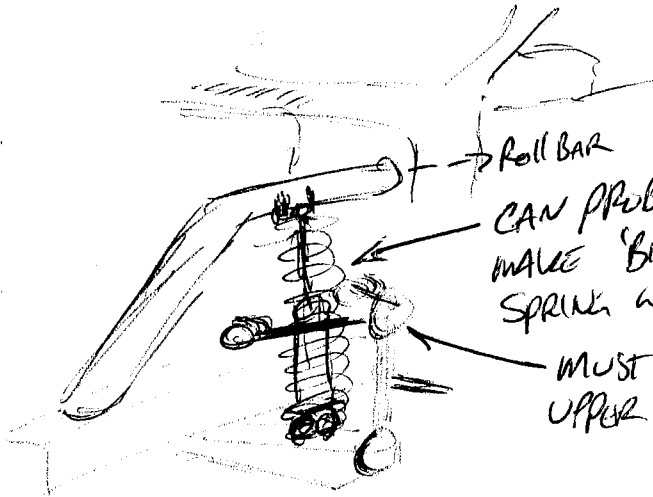
# ALIGNMENT ISSUE?



# ADJUSTABILITY ISSUE.

# PURPOSE: #  
- by. SPEC @ -1°?

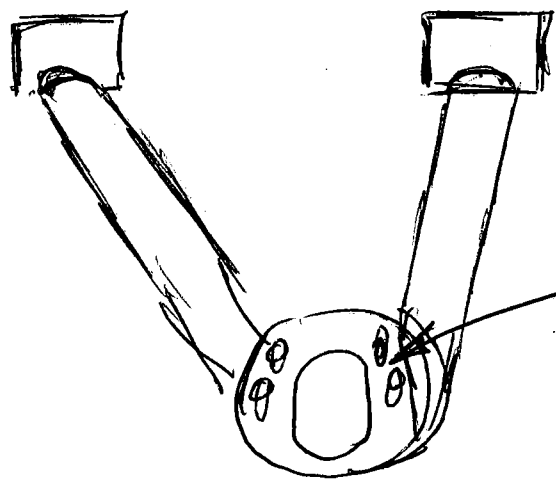
# Brainstorm



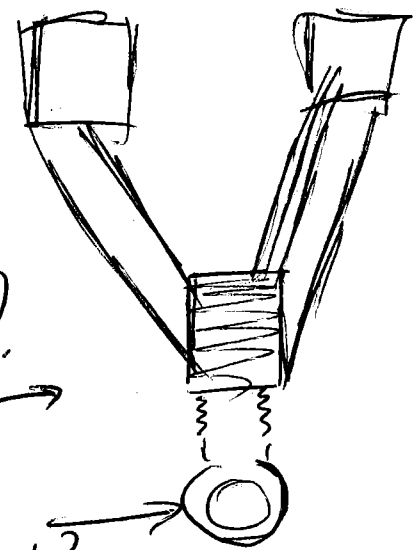
Roll Bar  
CAN PROBABLY  
MAKE 'BIRD  
SPRING' WORK

MUST FAB } - 1" DIA?  
UPPER ARM

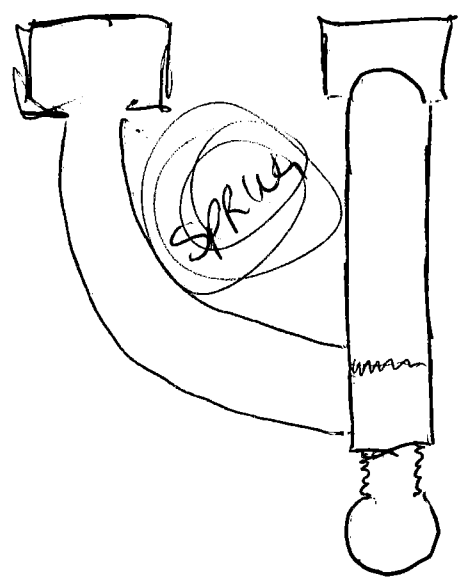
HAVE '090 I THINK...  
OR 1.25" .063?



How  
TIGHT?  
Realistically?  
OR

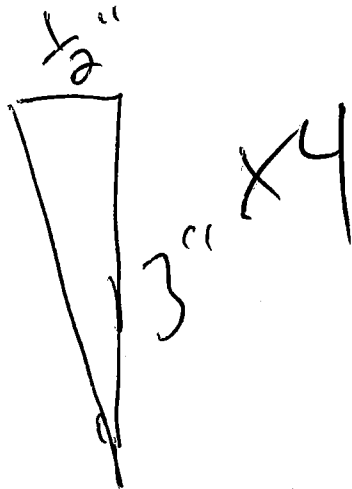
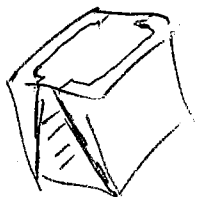
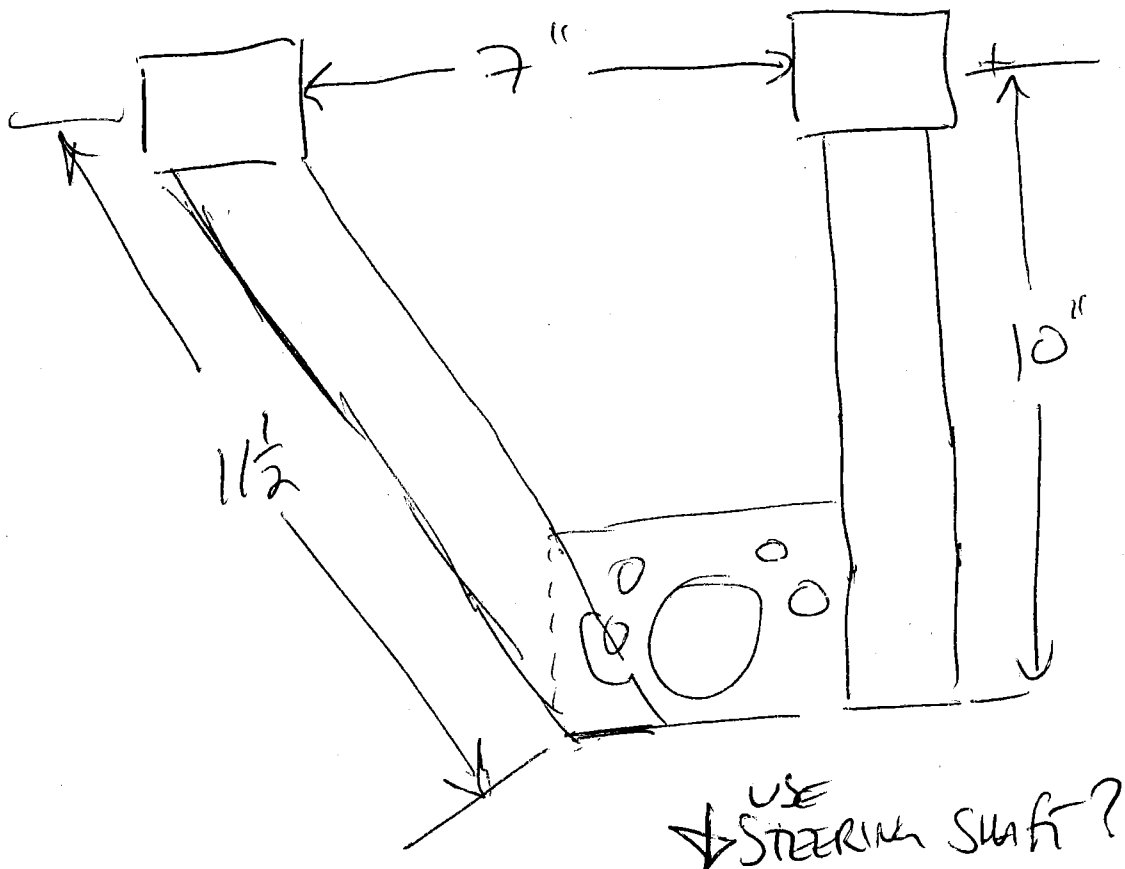


What  
JOINT?



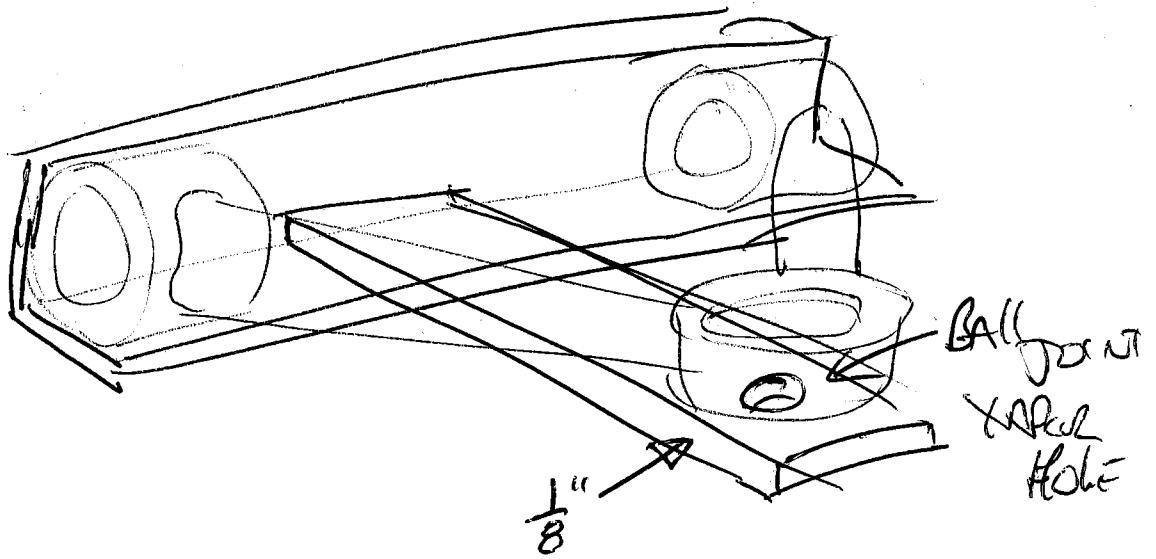
OR



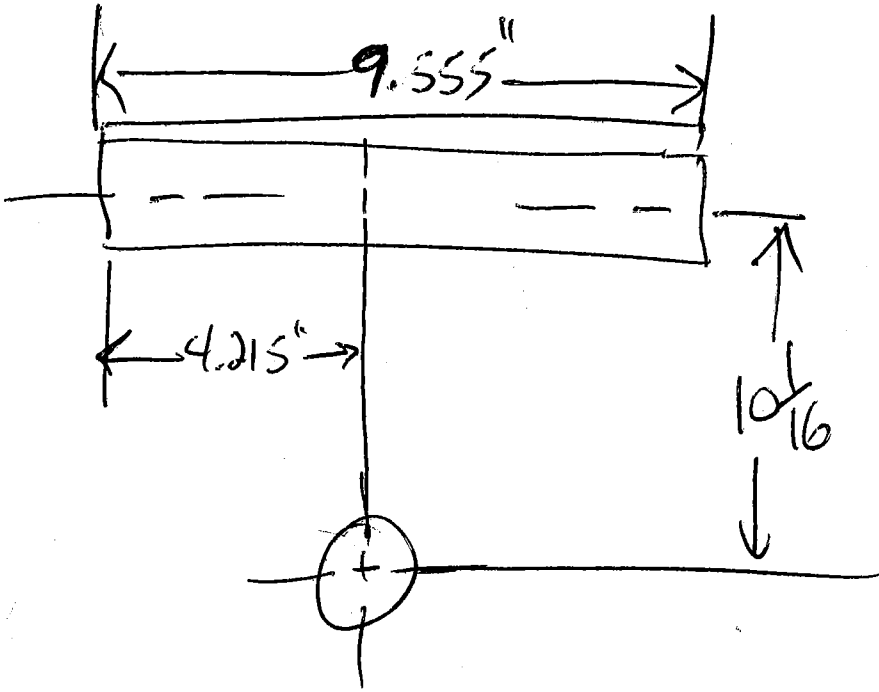


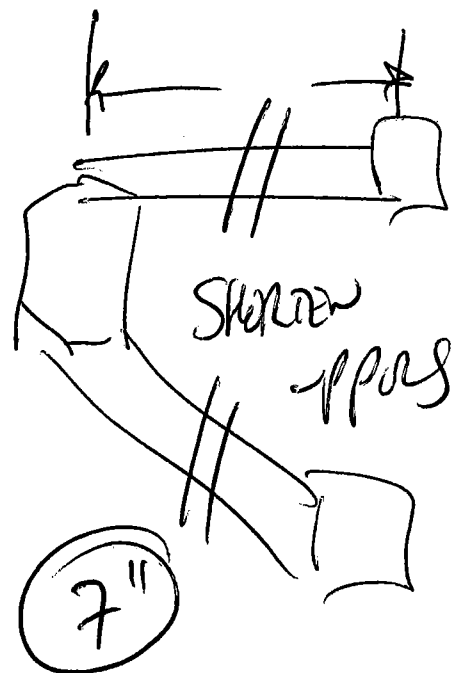
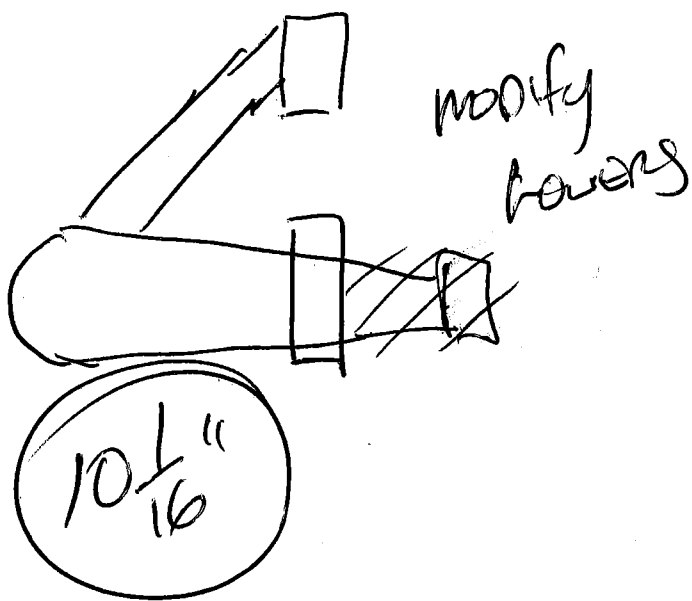
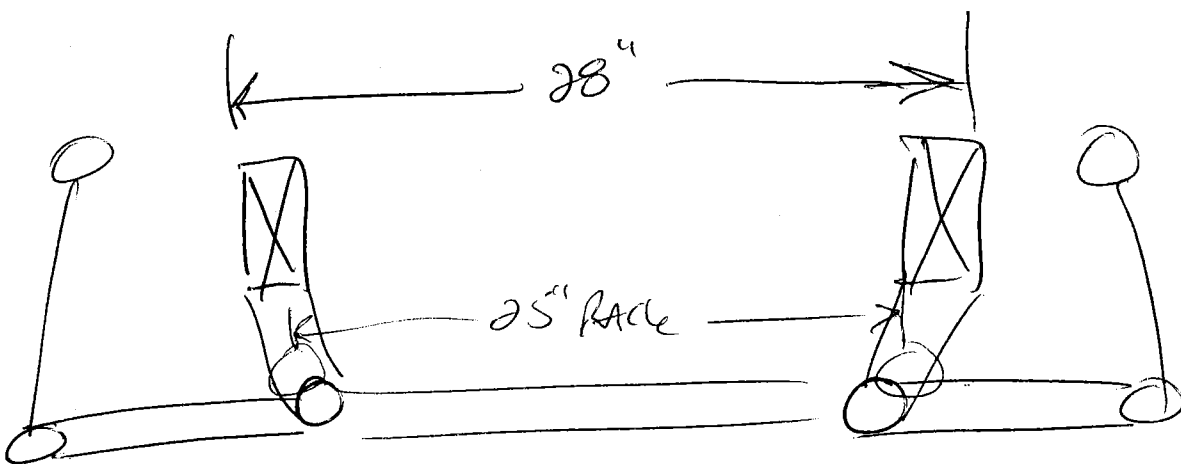
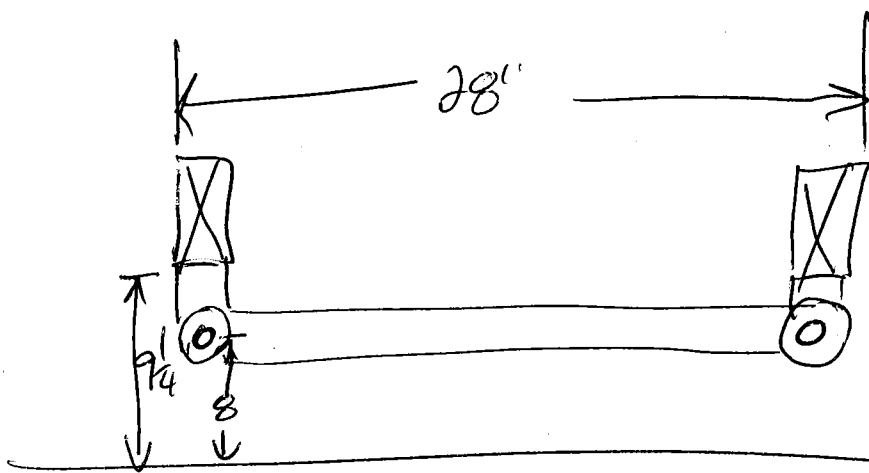
UPPER-ARM  
BRACKET  
BUSH

4

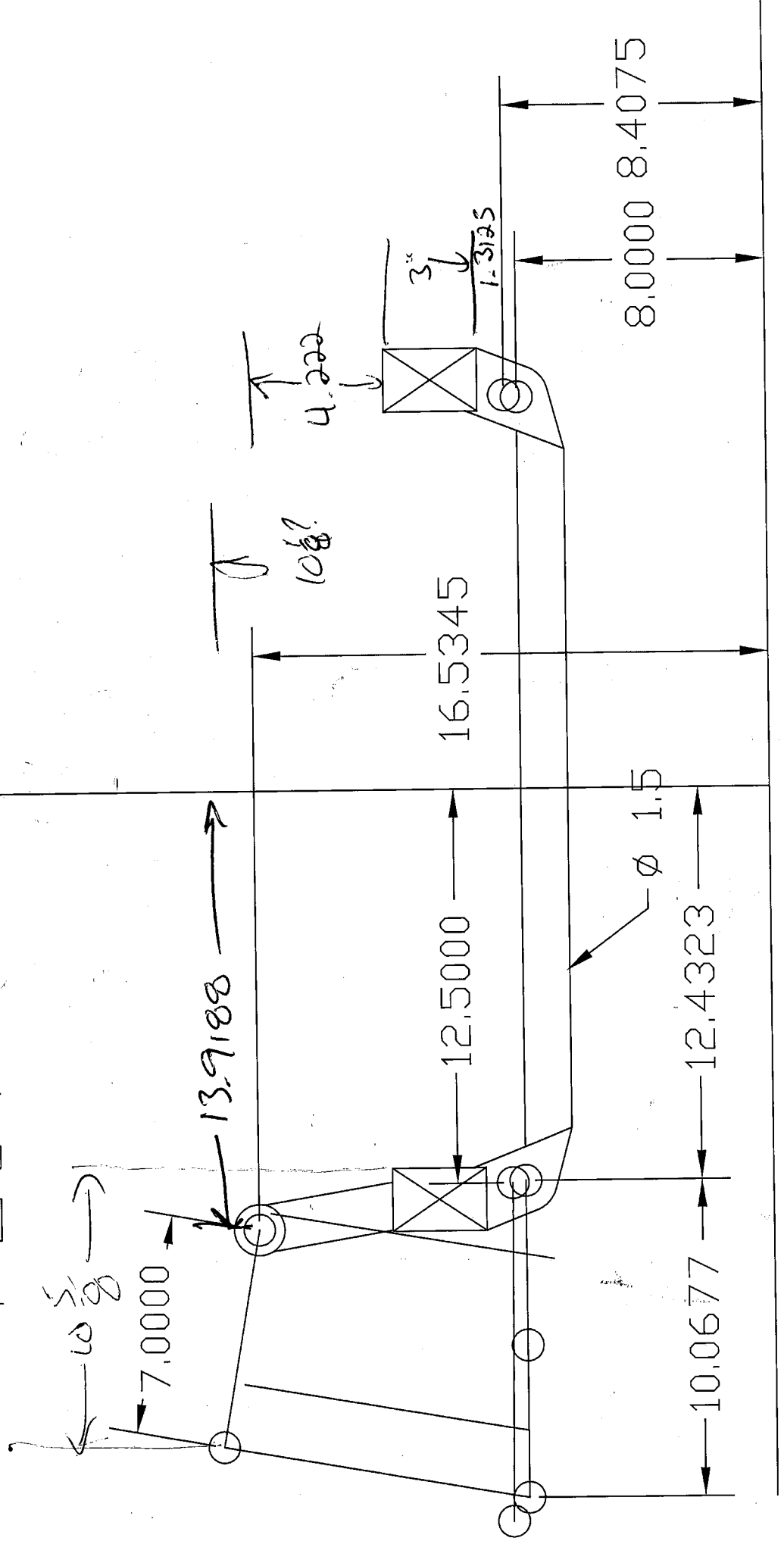


10g 0-0 mounts



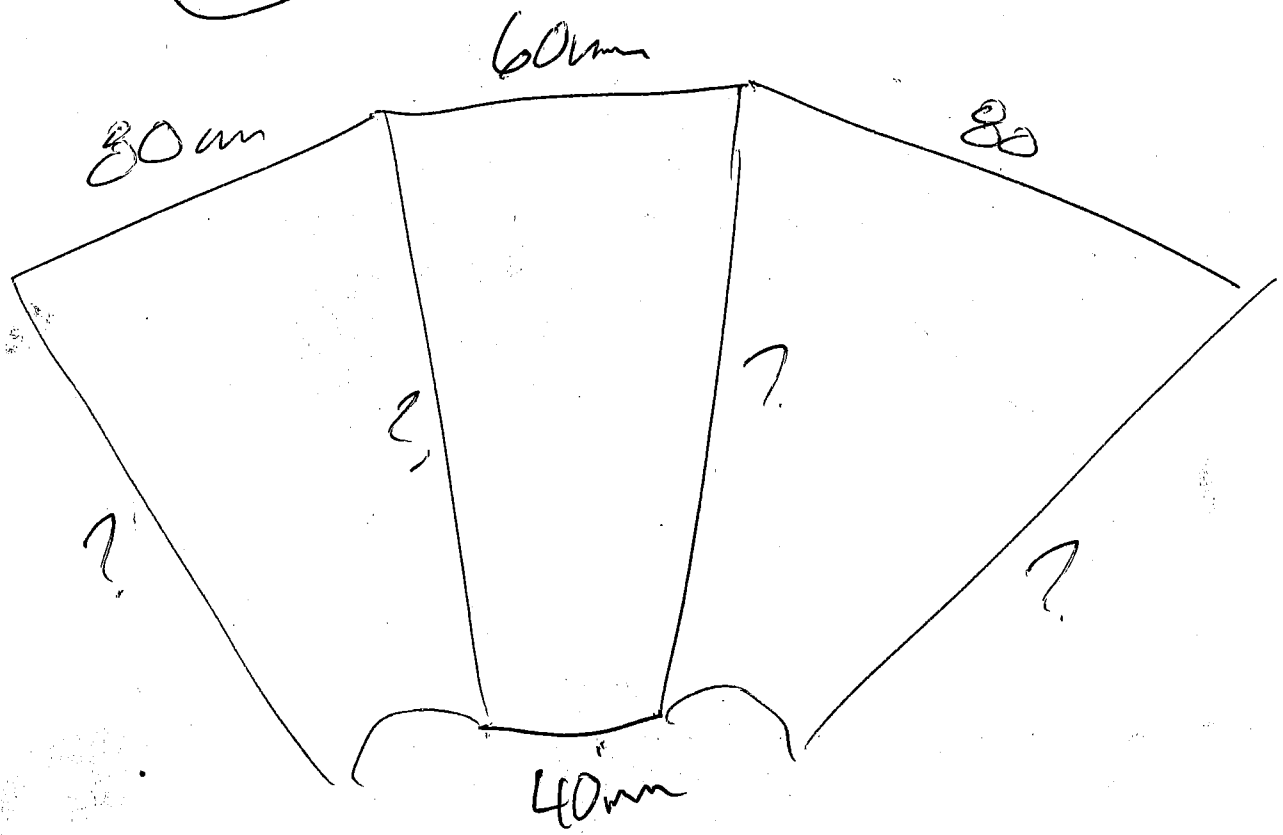
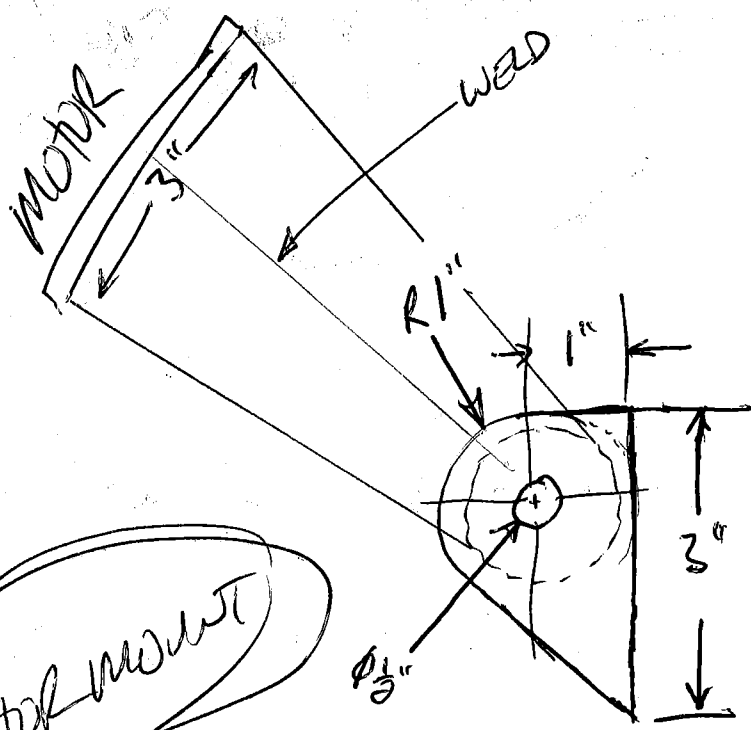


# POST-MISTAKE-I



$\frac{1}{8}$ "  
BLO?

MOTOR MOUNT



PANHEAD SPRING

OD:  $5\frac{1}{4}$   
ID:  $4\frac{1}{8}$



top to bottom

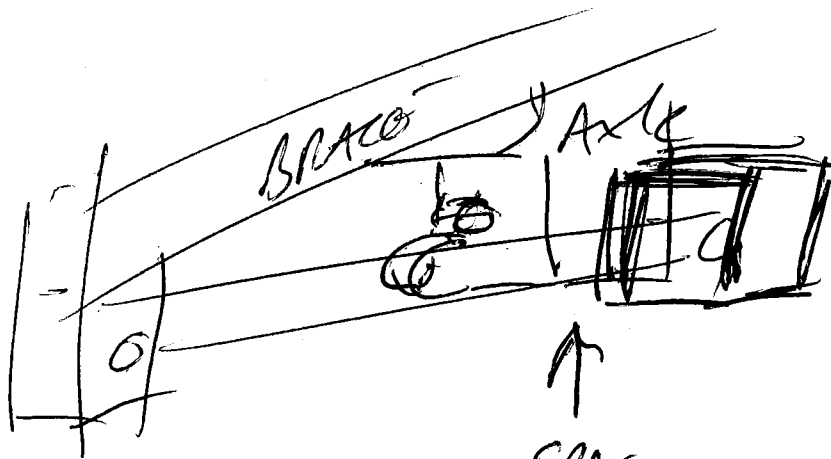
OD:  $3\frac{1}{2}$   
ID:  $2\frac{3}{8}$



SPRING CAP

← 2 x 3

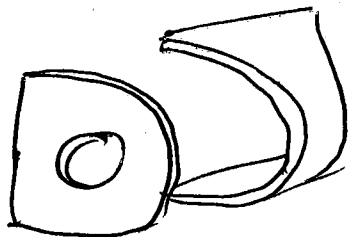
x 2



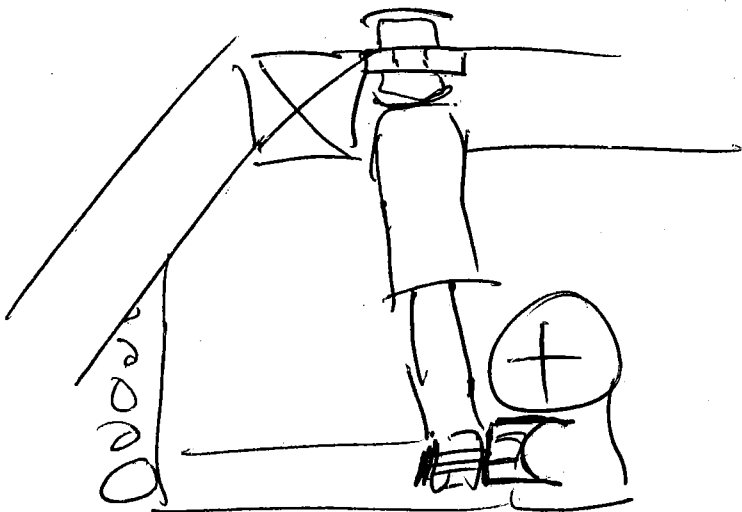
PANHEAD  
NUT

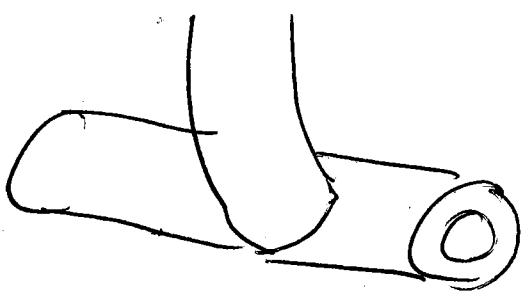
SPACE  
AS NEEDED

★ MATCH OEM - ISH

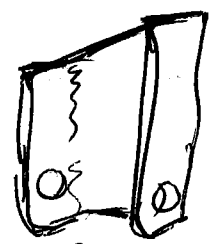
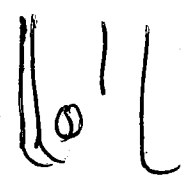
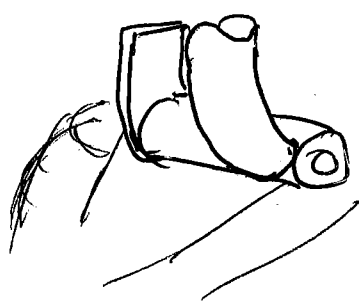


Shock ramp



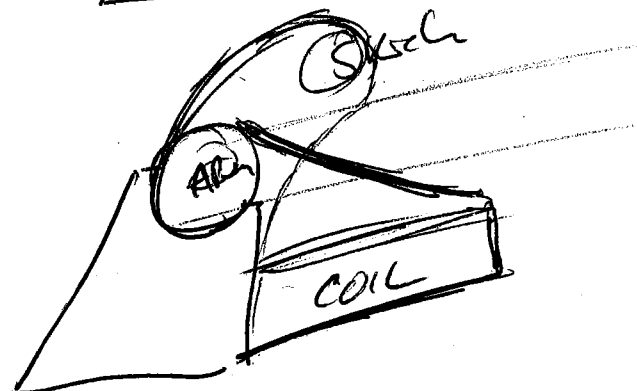
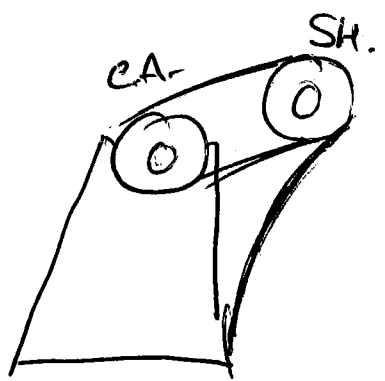
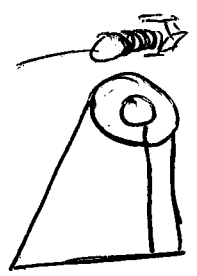
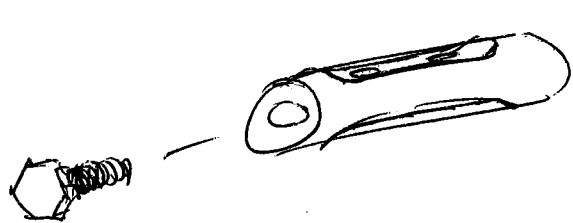


UPPER  
A-ARM  
MOUNTS

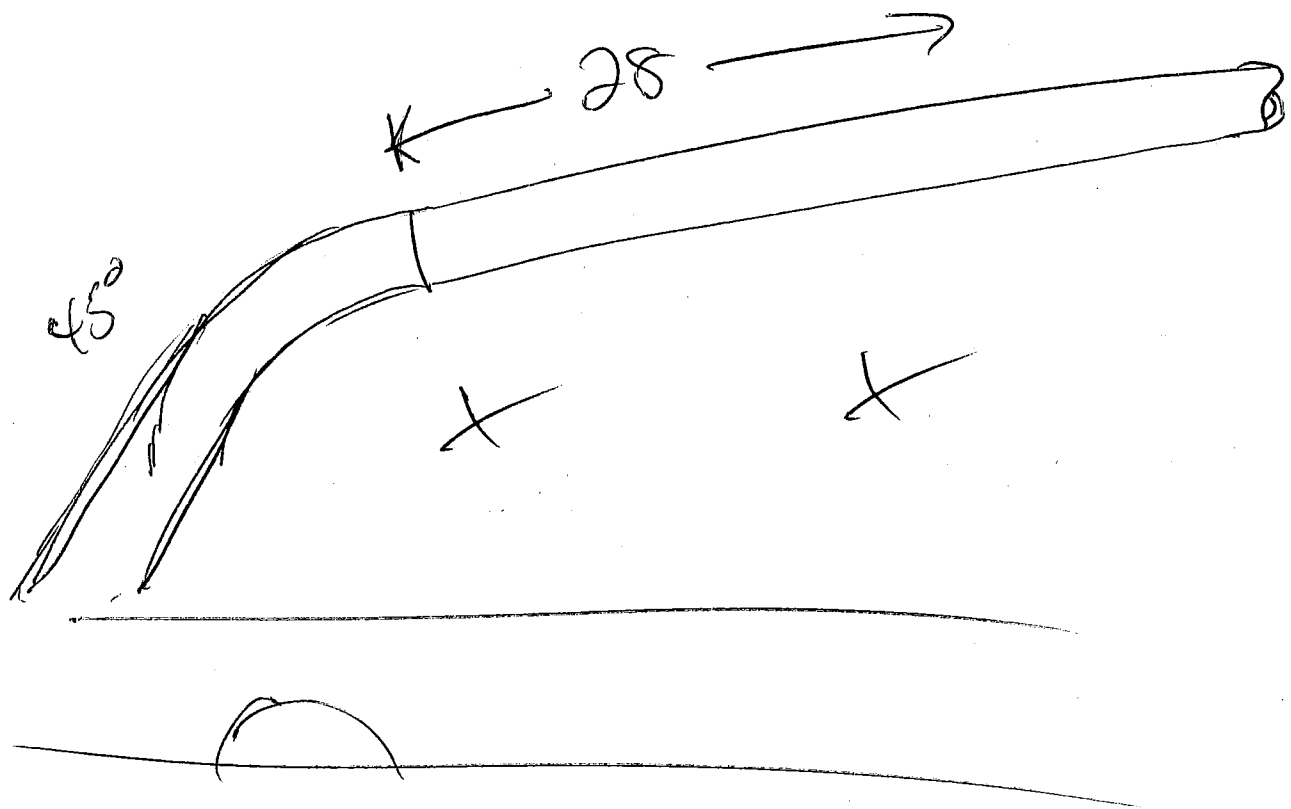


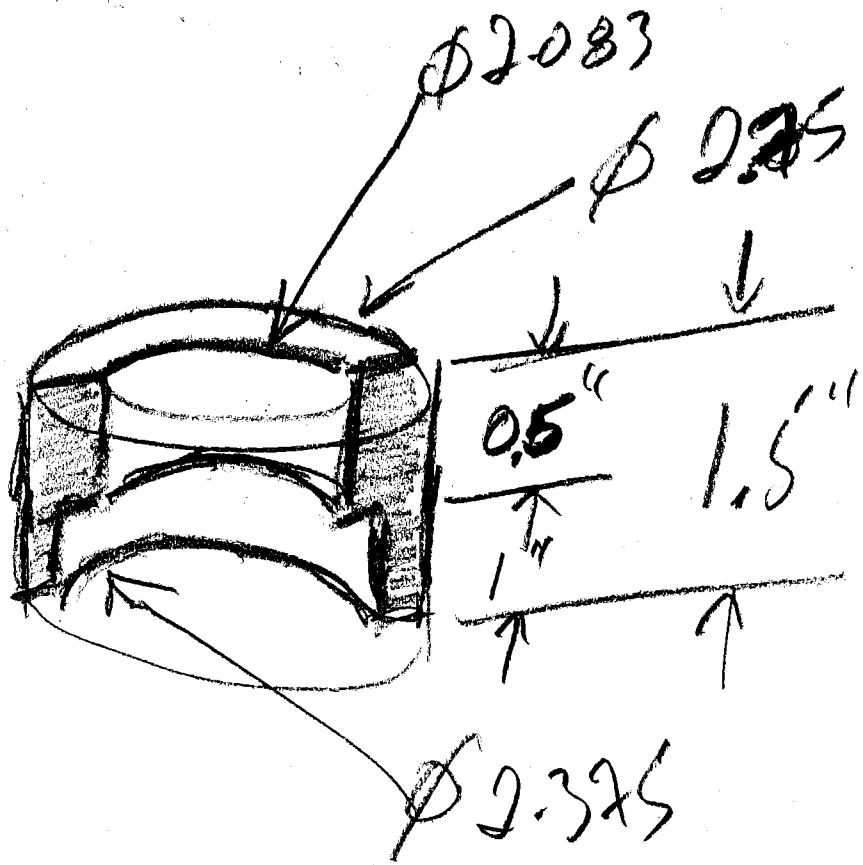
BRACE  
TO X

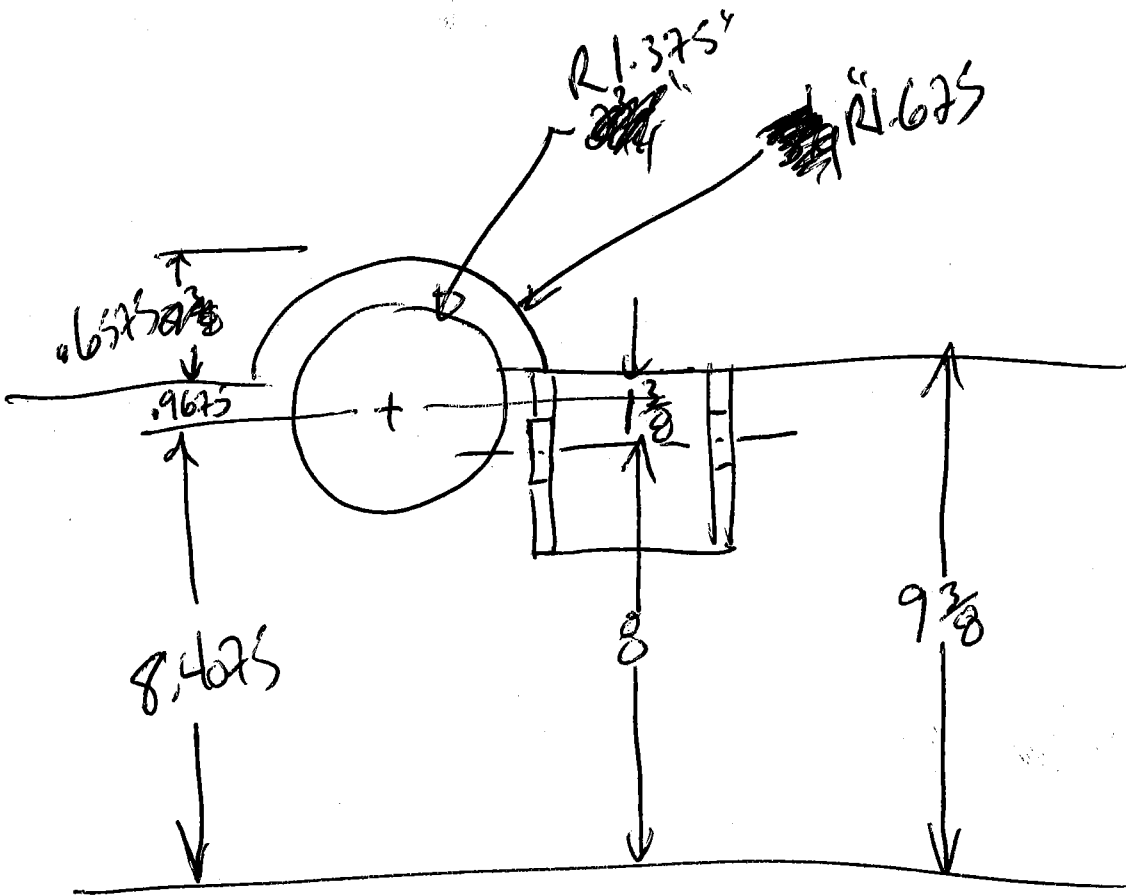
RWD

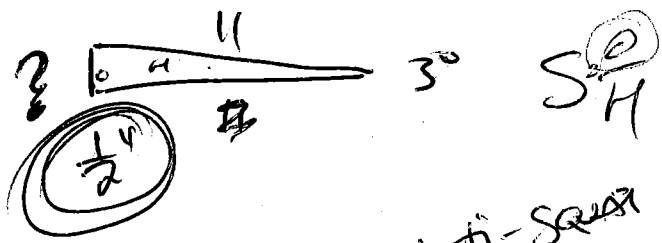




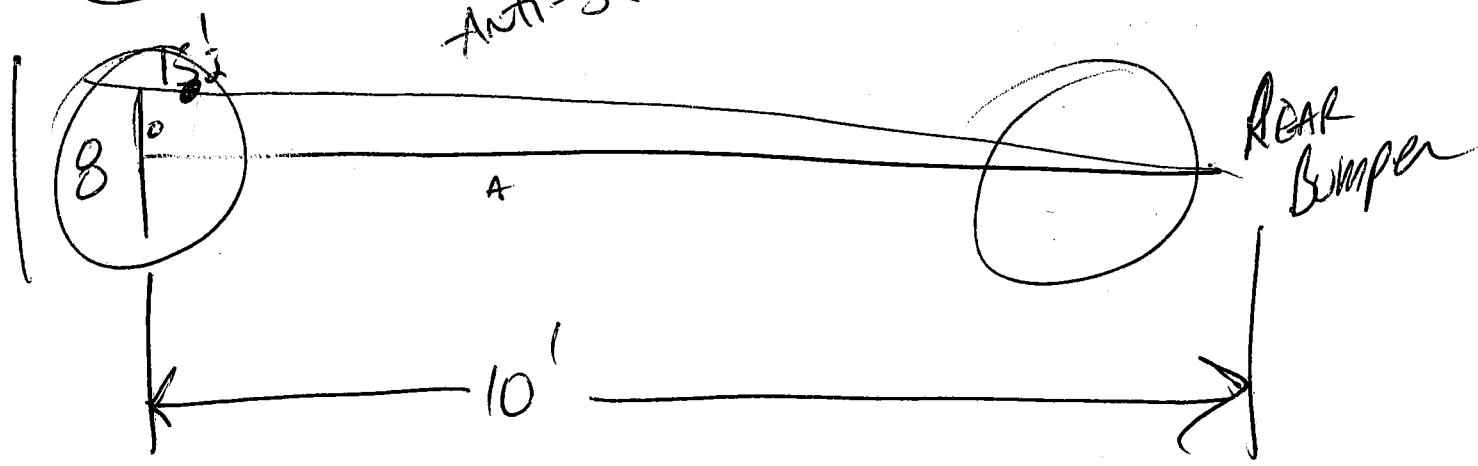








Anti-SQUASH



# Filefly

for  
the  
fly

